



# Graphic Drawing Tablet

## Star 01& 02 Manual

Windows 8.1, 8, 7, Vista & XP,  
Mac OSX 10.6.8 or above



XP-Pen

Any questions, please contact us

Web site: [www.xp-pen.com](http://www.xp-pen.com)

Mail: [service@xp-pen.com](mailto:service@xp-pen.com)



Designed by XPPEN Technology CO. in California, Assembled in China

[www.xp-pen.com](http://www.xp-pen.com)

# Start 01 & 02 Graphic Tablet User's Manual

## Safety Precautions

This manual uses the following symbols to ensure that the XP-Pen Tablet is used correctly and safely. Be sure to read and observe the Safety Precautions.

### [Symbol description]


#### **WARNING**

This symbol indicates a potentially hazardous situation that should be avoided or you risk the possibility of serious injury or death.


#### **CAUTION**

This symbol indicates a potentially hazardous situation that should be avoided or you risk the possibility of serious injury or death.

### [Meaning of Symbols]

 Indicates a safety alert.

 Indicates a safety alert.

 Indicates a mandatory action.



**Do not use this product in a control system area that requires a high degree of safety and reliability.**

In such a system, this product could negatively affect other electronic devices and could malfunction due to the effect of those devices.



**Turn the power off in areas where use of electronic devices is prohibited.**

Onboard an aircraft or in any other location where use of electronic devices is prohibited, this product if left on could negatively affect other electronic devices.

Unplug the USB connector from this product and turn the power off.



**Keep the product away from children.**

Accessories to this gadget may present a choking hazard to small children. Keep all accessories away from small children.



#### **CAUTION**

**Do not place this product on unstable surface.**

Avoid placing this product on unstable, tilted surface or any locations exposed to excessive vibrations. This could cause the tablet to fall or impact surfaces which may result in damage and/or malfunction to the tablet.

**Do not place heavy objects on top of this product.**

Do not place heavy objects and do not step on, or place your body weight on this product as this could cause damage.



**Avoid extreme high or low-temperature exposure to the XP-Pen tablet.**

Do not store this product in areas that drop below 5°C or above 40°C. Avoid locations with excessive temperature fluctuations. This may result in damage to the product and its components.



**Do not disassemble**

Do not disassemble or modify this product which may expose you to heat, fire, electric shock or injury. Disassembling the product will void your warranty.



**Do not use alcohol for cleaning.**

Never use alcohol, thinner, benzene or other mineral solvents that may discolor and cause deterioration to the product.



**Do not expose to water.**

Be cautious of water and all liquids that may be near the tablet. Exposure to water or liquid could damage the product.



## CAUTION



Avoid placing metallic objects especially magnetic objects on the tablet. Placing metallic and/or magnetic objects on this product during operation may cause it to malfunction or damage it.



**Do not strike the pen against hard objects.**

Striking the pen against hard objects can cause damage to the pen.



**Avoid gripping the pen too tightly, and Avoid excessive weight/pressure on the Express Key button and pen**

The pen is a high-precision instrument. Avoid pressing too tightly on the Express Key button, and keep any objects from covering the pen to avoid potential damage. Keep the pen away from areas of high dust, contaminants, or any particulate matter that can effect or damage the pen.

## Limitation of Liability

- XP-Pen shall in no event be liable for damages resulting from fires or earthquakes, those caused by third parties and those arising from user misuse, abuse or neglect.
- XP-Pen shall in no event be liable for incidental damages - including but not limited to loss of business income, interruption of business activities, corruption or loss of data-that arise out the use or failure to use this product.
- XP-Pen shall in no event be liable for damage resulting from uses not documented in this manual.
- XP-Pen shall in no event be liable for damages from malfunction caused by connection to other devices or use of third party software.

# Contents

<b>I、Product Image</b>	3
1、Product Overview	4
2、Working area	5
<b>II、Accessories instructions</b>	6
1、Stylus	7
2、Replacement of pen tip	8
3、Double-clicking the pen	8
4、Pen scrolling function	9
5、Storing the pen	9
<b>III、Graphic tablet driver settings</b>	10
1、Windows driver install	11
2、Mac driver install	12
<b>IV、Windows Setup Assistant</b>	13
1、Pen Tablet	14
2、Info	15
3、Monitor Settings	16
4、Button	19
5、Express Key(Start 02 only)	21
6、Scope	23
7、Pressure	25

<b>V、Mac Setup Assistant</b>	27
1、Tablet Setting	28
2、Info	28
3、Monitor	29
4、Pen	30
5、Hot Express(Start 02 only)	33
6、Scope	35
<b>VI、Uninstall Driver</b>	37
1、Windows operation system	38
2、Mac OS	38
<b>VII、FAQ</b>	39

# Chapter I

## Product Image

### 1.Product overview

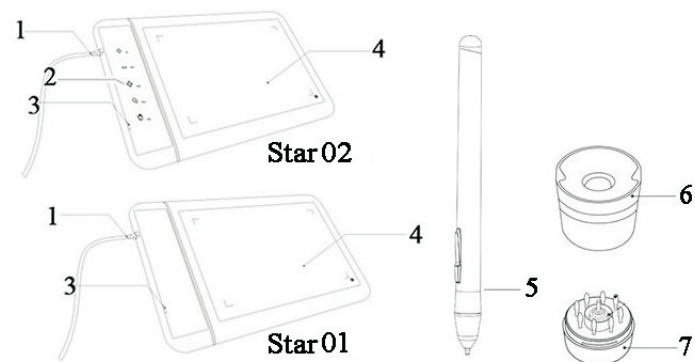


Image 1-1 Product overview

- (1)USB cable
- (2)Express keys (Star 02 only)
- (3)Status indicator light
- (4)Working area
- (5)Stylus
- (6)Pen stand
- (7)Pen tip/Pen tips storing bottom

#### NOTES :

- (1)**Under the normal working state, when a stylus is beneath the working area within the induction scope, the blue indicator light will blink once per five seconds.**
- (2)**When a stylus is touching the working area, the blue indicator light will always be bright.**

## 2.Working area

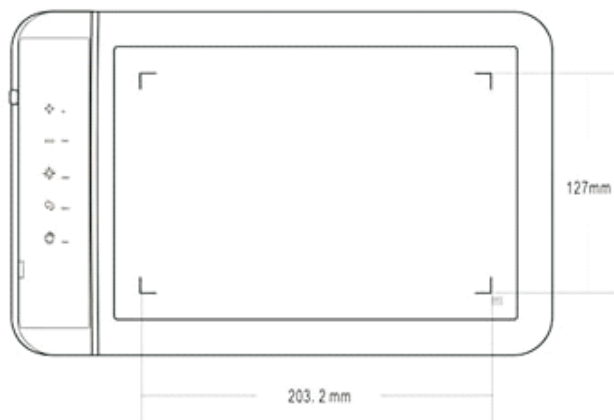


Image 1-2 Working area

## Chapter II

### Accessories introductions

## 1、Stylus

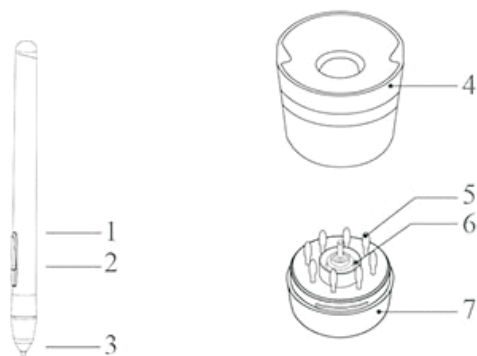


Image 2-1 Stylus and accessories

- (1)The second barrel button
- (2)The first barrel button
- (3)Pen tip
- (4)Upper pen stand
- (5)The spare pen tips
- (6)Pen clip
- (7)Pen stand bottom

## 2、Replacement of pen tip

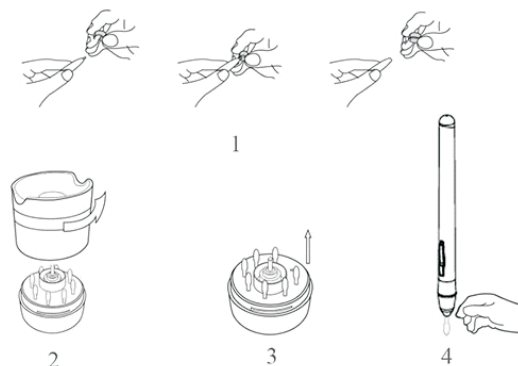


Image 2-2 Replacement of pen tip

- (1)Pull out the pen tip from the digital pen by using the included Pen Clip.
- (2)Turn the Pen stand counterclockwise with a 75° rotation and pull out the old tip.
- (3)Install the new pen tip in the same manner as you pulled out the old tip rotating in the clockwise direction.
- (4)Push the pen tip into the digital pen.

## 3、Double-clicking the pen

When you double-click the digital pen (equivalent to a double click with a mouse) try to keep the pen tip away from the tablet's surface, or try to lift the pen tip as fast as possible before the second tap to avoid misinterpretation of a single click by the software.

#### 4、 Pen scrolling function

The digital pen has the same function as a normal mouse for scrolling pages. Press the first button of the digital pen (same function as mouse's scrolling wheel) over the tablet's working area to scroll pages.

#### 5、 Storing the pen

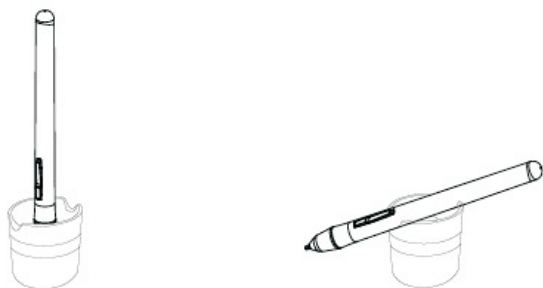


Image 2-3 Storing the pen

## Chapter III

### Graphic Driver Tablet Settings



## 1、Windows driver install

- (1) Connect Star 01 & 02 to a computer.
- (2) Insert driver disc into computer/notebook CD/DVD ROM, and follow the instruction.  
  
Windows System: If the driver disc does not indicate auto run installation, explore the file and execute "setup.exe" or "install.exe" to install.
- (3) When driver installation is completed, the small icon "📁" shows that the graphic tablet has succeed in installing and is ready to be used.

### NOTES :

- (1) **Suspend/Disable Anti-virus software, firewall or any other security software you are using before installing the driver.**
- (2) **Uninstall/remove other graphic tablet drivers and related software then reboot the system to avoid system conflict before installing the driver.**

## 2、Mac driver install

- (1) Connect Star 01 & 02 to a computer.
- (2) Mac OS system: open the file list, find "Mac Driver" and run execution file "📁".
- (3) Follow its install procedure/steps, then reboot the system.
- (4) Connect Star 02 to Mac until the "Keyboard Setup Assistant" window appears then close it.

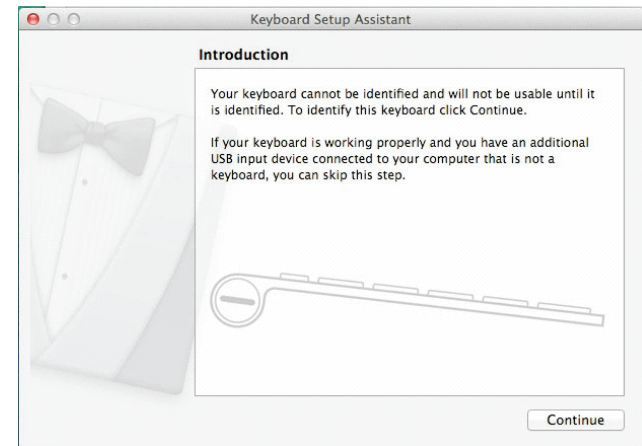


Image3-1 Keyboard Setup Assistant


# Chapter IV

## Windows Setup Assistant

### 1、Pen Tablet

Start graphic tablet control panel :

Here are two ways to enter graphic tablet settings or diagnose problem settings:

- (1) Tap on the icon (  ), from the system tray.
- (2) Manually input 'graphic tablet control panel' from the following methods:

#### For Windows XP:

Tap [Start] - [Settings] - [Control Panel], and double-tap the [Tablet Setting] icon.

#### For Windows Vista or Windows 7:

Tap [Start] - [Control Panel], and double-tap the [Tablet Setting] icon.

#### For Windows 8:

Move your cursor to screen lower left corner, click [right button] - [Control Panel] - [Tablet Setting].

#### Setting option :

You may change the graphic tablet settings as follows:

- (1) Info
- (2) Monitor Setting
- (3) Button
- (4) Express Keys (Start 02 only)
- (5) Scope
- (6) Pressure

## 2、Info

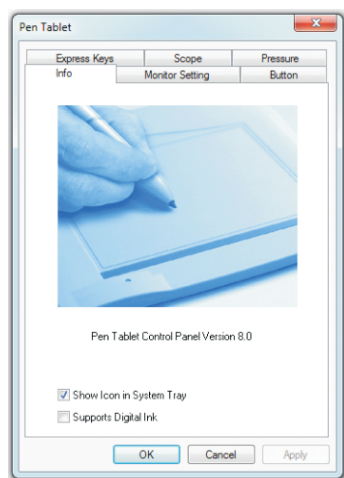



Image4-1 Graphic Tablet basic settings

### Info :

Graphic tablet driver version

### Show icon in system tray :

Select to show the tablet icon (  ) in the system tray.

### Support digital ink :

Select the digital ink pressure settings to support Windows 8, 7, Vista and Tablet PC.

### NOTE :

(1)After the tablet driver is installed in Windows, the tablet PC function setting will automatically support use in Microsoft Office (Word, Excel, PPT, Outlook), etc.

(2)When the tablet PC Function is not in use, it is recommend to disable it.

## 3、Monitor setting

The Monitor mapping option allows you to adjust the graphic tablet to work on single or dual monitors.

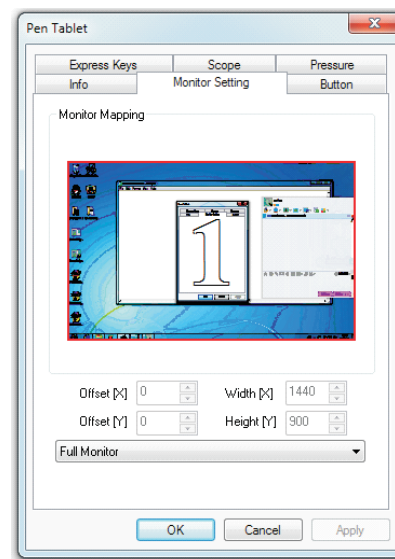


Image4-2 Example of a single monitor setup

Image4-3: When the operating computer is connected to a dual monitor, the graphic tablet will automatically detect the dual monitor setting. You may move your pen horizontally and your cursor will automatically move to another screen. You can now freely move the pen's cursor between screens.



Image4-3 Example of a Dual Monitor setup

Image4-4: When you set a graphic tablet assignment for Monitor 1, movements on your tablet will be only shown on the selected monitor.

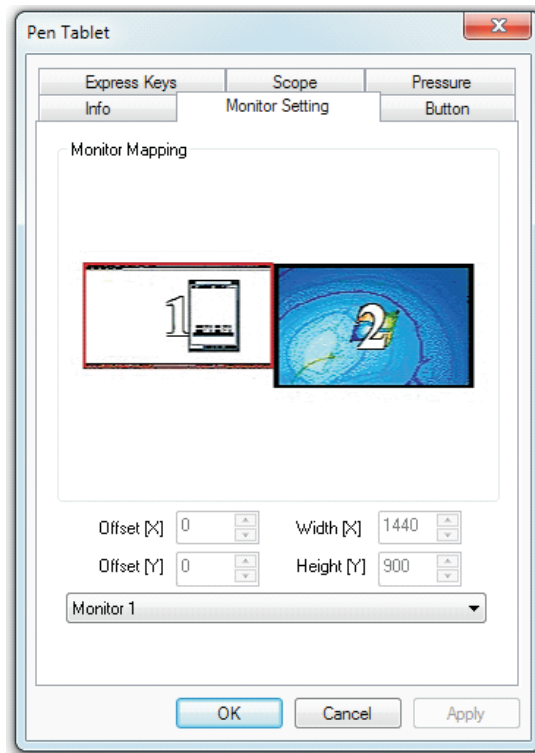


Image4-4 The graphic tablet's assignment for Monitor 1

**NOTE :**

Monitor mapping can be modified to assign your desired screen working area, however, this may be limited by Driver Requirements on your computer.

## 4. Button

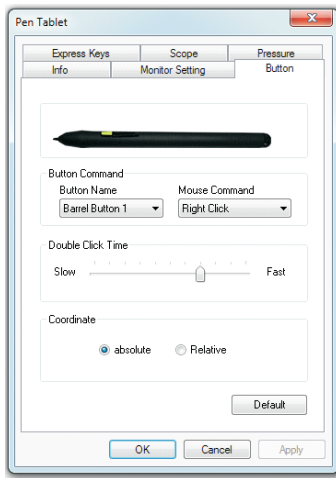


Image4-5 The button tab settings

### Button name :

You may reprogram the functions of the pen's two-barrel buttons by selecting the button name from the drop down menu and assigning your desired commands like a traditional three-button mouse.

### Mouse command on digital pen :

Based from the standard operations of a Mouse you can select left click, left double click, middle click, middle double click, right click, right double click, pen/eraser toggle, or no action.

### NOTE :

**Pen tapping as a mouse left click function.**

### Pen/Eraser Toggle :

When the digital pen is in working mode, press the barrel button to switch from pen/eraser mode. The screen will indicate current pen/eraser mode. You may assign the barrel button to a different action in the Pen Tablet button settings.

### NOTE :

**Pen/Eraser toggle switch mode only swaps between pen model and eraser model, not as a pen brush.**

### Double click time :

You may adjust the duration of time between double clicks. Move the 'Double Click Time' cursor towards Slow or Fast depending on your preference.

### NOTE :

**This setting will change the speed of the graphic tablet mouse double click time and digital pen.**

### Coordinate model :

**Absolute(Pen) Mode:** activates the Pen's digital functions during use in the tablet's work space.

**Relative(Mouse) Mode:** allows the pen to function as a standard mouse.

## 5. Express Keys (Star 02 only)

The Express Key Buttons can be set as signed different functions to the customization of the user:

- (1) Scrolling
- (2) Zoom in and out
- (3) Brush Size
- (4) Sound
- (5) Up and down
- (6) Left and right
- (7) Forward and back Layer
- (8) The "+" and "-" functions can be modified in the drop down menu

### NOTE :

Press function groups(+ and -) at the same time for 3 seconds to "open" or "close" the touch Hot Express

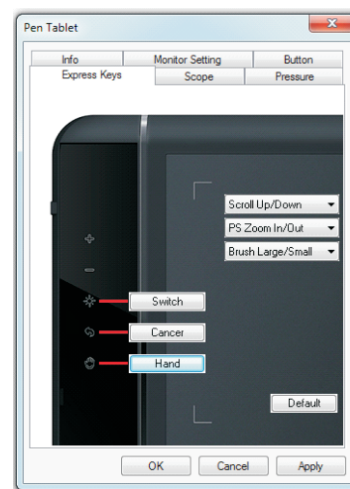


Image4-6 Hot Express setting

### Other setting:



: Switch button can be modified to the "+" and "-" corresponding buttons.



: Cancel button, it can be reset as other buttons.

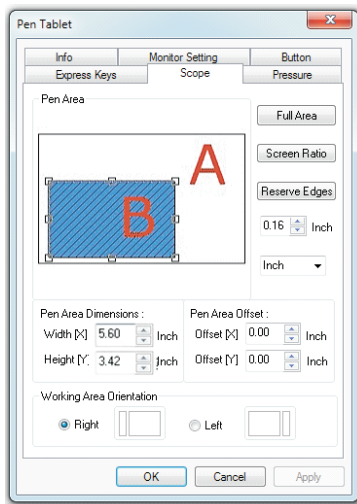


: Hand Tool, it can be reset as other buttons.

## 6. Scope

### Setting your working area and graphic tablet express keys.

Move and drag the working area scale points to adjust your desired working area size. If you want to assign a working area location, move the working area to the assigned location, as required.



**Image4-7 Adjustment of Scope (working area)**

Full area (showed as A) is the digital pen magnetic induction area.  
Working area (showed as B) is the area that the digital pen controls the cursor on screen.

When scaling down the working area, small movements using the digital pen are moved to a larger scale on screen, this setting is suitable for larger sized graphic tablets.

#### Pen area dimensions :

Indicates the current height and width of the Pen area dimensions. You may also type in new values here to change the dimensions of the tablet working area.

#### Pen area offset :

Pen area offset: Indicates the horizontal and vertical distances of the upper left corner of the pen area. You may also set their values by typing in the numerical values here.

#### Full area :

Tap on the full area button to select the largest possible working area.

#### Screen ratio :

Set the tablet working area to the same as the screen size by clicking the button of [screen ratio].

#### Reserve edges :

Tap on the [Reserve edges] button to allocate space for the tablet.

#### Working area orientation :

The default working area orientation is "Right". If you would like to change the Express Keys on the left-side, select "Left" under the Scope options tab.

## 7. Pressure

The pressure tab helps you to get familiar with pen pressure functions. While using the digital pen with the pressure function activated as you press down with force the graphic tablet will detect the applied pressure value and send it to the current application. Pressure value starts with zero, the maximum value can vary slightly according to the device used.

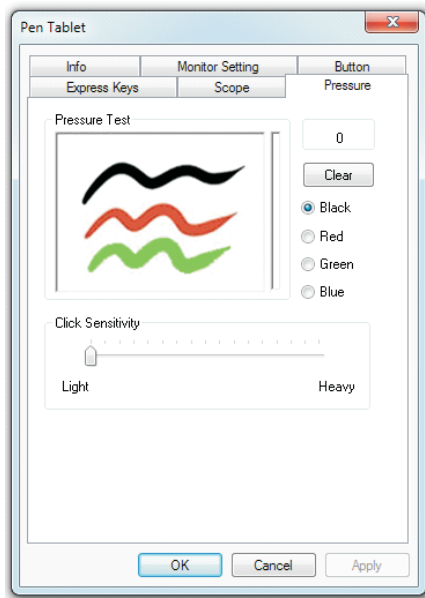


Image4-8 The pressure tab

### Pressure Test:

There is a test area to alter the thickness of the line according to the pressure applied by the pen on the tablet. The numerical value of the pressure level is shown in the field above the clear button. Heavier pressure corresponds to a thicker line.

### Clear :

Tap on the [clear] button to clean/delete the space within the pressure test area.

### Pressure Test color adjustment:

You may customize your preferred color setting within the options under the Pressure setting tab.

### Click Sensitivity :

Under the default setting, tapping with the pen tip is equivalent to a left click of a mouse. Move the slider in the sensitivity bar to adjust the response of the pen tip.

A Lighter value means the pen tip will react quicker with less applied pressure.



# Chapter V

## MAC Setup Assistant

### 1. Tablet Setting

- (1) Info
- (2) Monitor
- (3) Pen
- (4) Hot Express(Star 02 only)
- (5) Scope

### 2. Info

**Pen tablet setting version info** : Obtain current version of driver.

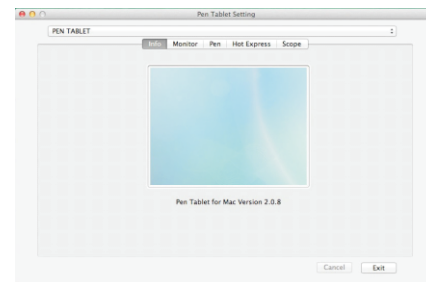
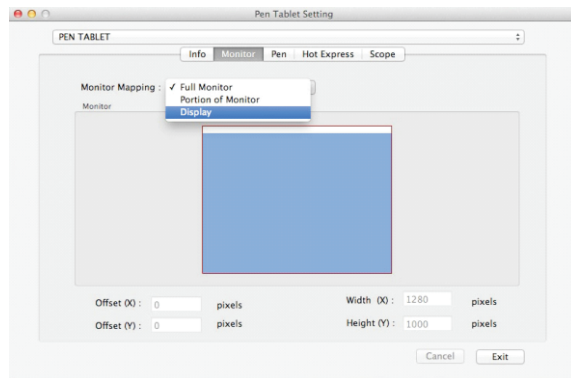


Image5-1 Info

### 3. Monitor

**Monitor Mapping :** Select “Full Monitor”, “Portion of Monitor(Monitor 1 or Monitor 2)” or “ Display (single monitor)”.



**Image 5-2 Monitor**

### 4. Pen

#### Button 1 & Button 2 :

Select the function for button 1 and button 2 from these options: “No Action”, “Left Click”, “Left Double Click”, “Right Click”, “Middle Click”, “Pen/Eraser”.

Pen/Eraser toggle function :

The pen/Eraser toggle function allows you to configure the button's command function. When the stylus is inside the sensing range of the working area press the barrel button to toggle between pen/eraser mode. The screen will indicate the current mode.

#### NOTE :

**The Pen/Eraser toggle switch will only toggle between the pen tip and eraser, not as “brush”.**

Pressure Test:

There is a test area to alter the thickness of the line according to the pressure applied by the pen on the tablet.

Click Sensitivity :

Under the default setting, tapping with the pen tip is equivalent to a left click of a mouse. Move the slider in the sensitivity bar to adjust the response of the pen tip.

A Lighter value means the pen tip will react quicker with less applied pressure.

**Clear :**

Tap on the [clear] button to clean/delete the space within the pressure test area.

**Pressure Test color adjustment:**

You may customize your preferred color setting within the options under the Pressure setting tab.

**Coordinate Mode :**

Pen Mode: activates the Pen's digital functions during use in the tablet's work space.

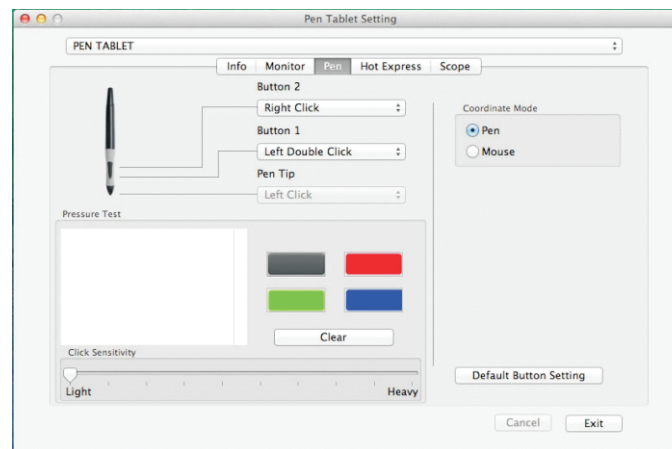
Mouse Mode: allows the pen to function as a standard mouse.

**Default Button Setting :**

Restore button default settings.

**NOTE :**

**Tapping with the pen tip is equivalent to a left click of a mouse.**



**Image5-3 Pen**

## 5. Hot Express (Star 02 only)

### Slide(Ring) ID :

Open /close hot express function options : No Action, Scrolling, PS Zoom In/Out, PS Step Forward/Backward, Brush Size, Page UP/Down, iTunes Volume, Arrow Up/Down, Arrow Left/Right, Forward/Backward, Layers Up/Down, Zoom In/Out and Redo/Undo etc.

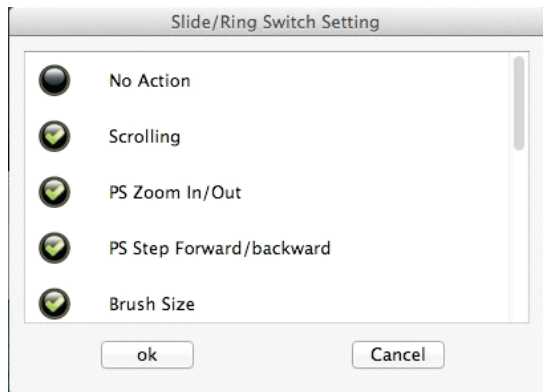


Image5-4 Slide/Ring Switch Setting

### Function Key ID :

Set K1, K2 and K3 Hot Express for “No Action”, “Slide Switch”, “Undo”, “Hand” or Reset Customer Defined. Each function setting is equivalent to the Slide Switch Setting option.

### Default :

Restore default settings

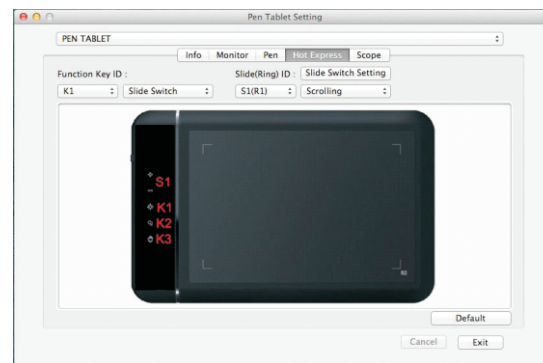


Image5-5 Hot Express

\*Press function groups(+ and -) at the same time for 3 seconds to “open” or “close” Hot Express.

## 6. Scope

### Pen Area :

This corresponds to the working space area and Hot Express.

### Full Area :

Tap on the “full area” button to select the largest possible working area.

### Screen Ratio :

Set the tablet working area to the device’s display screen size by clicking on the screen ratio button.

### Reserved Edges :

Tap on the Reserve edges button to adjust the working area on the tablet.

### Pen Area Dimension :

Width(X), adjust the right side manually.  
Height(Y), adjust the bottom side manually.

### Pen Area Offset :

Offset(X), adjust the horizontal area of the works space manually.  
Offset(Y), adjust the vertical area of the work space manually.

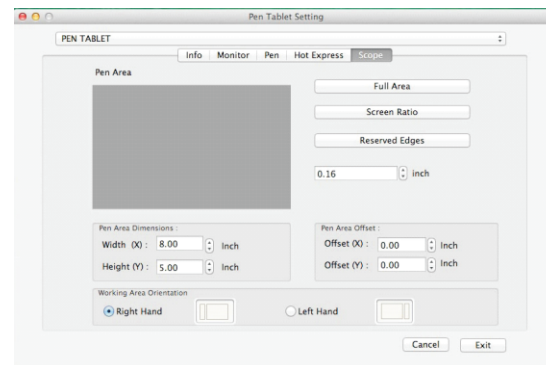


Image5-6 Scope

### Working Area Orientation :

Right Hand & Left Hand users: The default working area orientation is “Right” for right hand users. If you would like to change the Express Keys to the left handed format select “Left”.

## Chapter VI

### Uninstall Driver

#### Windows operating system

- (1) Explore [Start]→[Program] →[XP-Pen] →[Uninstall driver], and follow the instructions until the uninstall is completed.
- (2) Explore [Start] →[Add/Remove program] →find[Tablet Driver V8.0], select[Add/Remove], and follow the instructions until the process is completed.

#### Mac OS

Explore[Finder]→[Application]→[Touch Tablet]→[Uninstall Pen Tablet Driver], and follow the instructions until the process is completed.

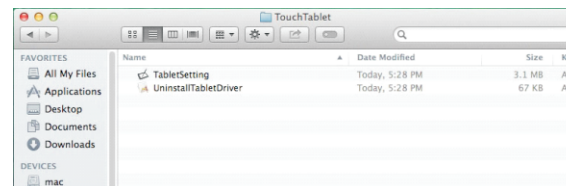


Image5-7 Uninstall

#### NOTE :

If you are required to reinstall the graphic tablet driver, reboot your computer first before reinstalling the driver.


## Chapter VII

### FAQ

**Q1 : How do I update my software to the newest driver?**

**A1 :** Please visit the XP-Pen website to download the current updated driver version: [www.xp-pen.com](http://www.xp-pen.com)

**Q2 : How will I know if the driver is completely installed?**

**A2 :** When the driver is completely installed you will see an icon “” appearing on the system tray (lower right corner) . Once completed, the digital pen should be in control of the cursor, and activated for configuration on the pressure test area.

**Q3: If my graphic tablet is not working, how do I determine whether it's caused by a hardware or software malfunction?**

**A3:** If your graphic tablet is malfunctioning, do the following:

1. Connect your graphic tablet to different computers than previously used, if the graphic tablet functions properly, then the issue is a “driver conflict” with the system file or application.
2. The graphic tablet LED light should indicate a malfunction.

Pressing the pen tip on the graphic tablet should activate the LED light on your tablet, this indicates the hardware is in proper working order.

With the pen placed away from graphic tablet area press the pen barrel button, if the LED light is on, this indicates the hardware is in proper working order.