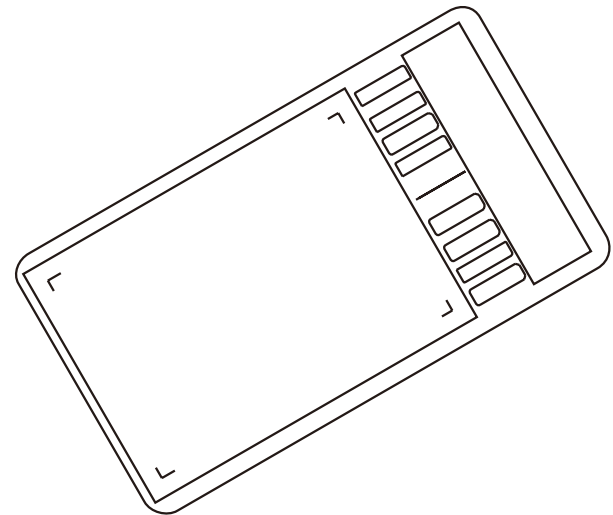




Graphic Pen Tablet Star 03 Manual

Windows 10/8/7/Vista/XP Mac OS X 10.6.8 or above



Website: www.xp-pen.com
Mail: service@xp-pen.com

Please contact us with any questions



Designed by XPPEN Technology CO. in California, Assembled in China

www.xp-pen.com

Thank you for purchasing the XP-Pen tablet. Our product quick guide currently supports English, Russian, Japanese, German, Korean, Chinese, Italian, Spanish, and French. We apologize if your preferred language is not supported.

Contents

I. Product Overview	1
a. Overview	1
b. Working area	1
II. Stylus Pen	2
a. Overview	2
b. Replacing the pen tip	2
III. Driver Installation	3
a. Windows	3
b. Mac	3
IV. Driver Settings UI	3
a. Windows	3
b. Mac	9
V. Driver Uninstallation	11
a. Windows	11
b. Mac	11
VI. FAQ	11

{I. Product Overview}

a. Overview

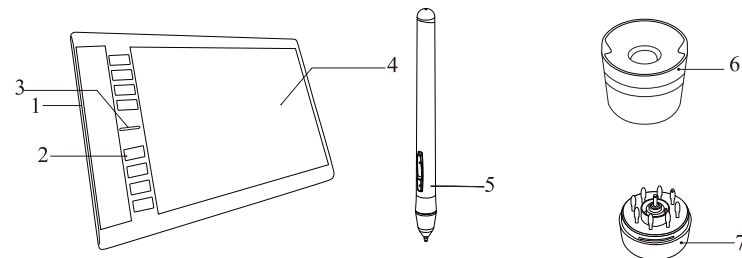


Image 1-1: Overview

1. USB port
2. Shortcut keys
3. Status indicator light:
 - a. On, solid: Stylus is in contact with the working area.
 - b. On, blinking: Stylus is in range of, but not touching, the working area.
 - c. Off: Stylus is not in range of the working area.
4. Working area
5. Stylus
6. Pen stand
7. Pen tip replacements (stored inside the pen stand)

b. Working area

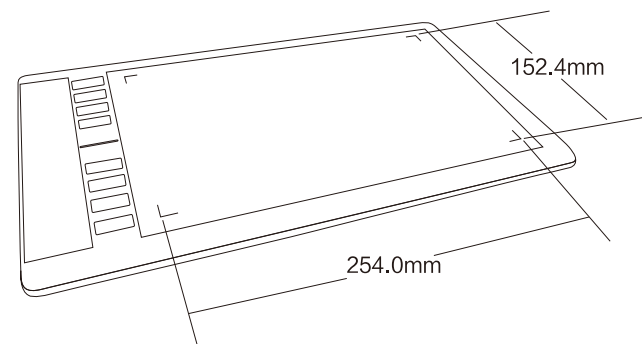


Image 1-2: Working area

{II.Stylus pen}

a.Overview

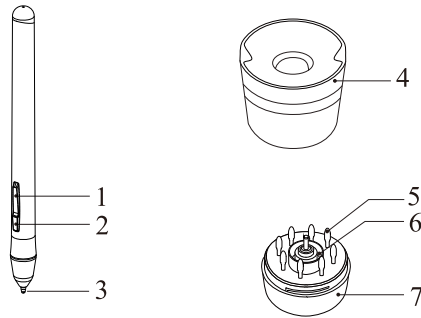


Image 2-1: Stylus and accessories

- 1.Barrel button 2
- 2.Barrel button 1
- 3.Pen tip
- 4.Pen stand top
- 5.Replacement pen tips
- 6.Pen clip
- 7.Pen stand bottom

NOTES:

- (1). Barrel button functions can be customized.
- (2). Stylus does not use a battery.

b.Replacing the pen tip

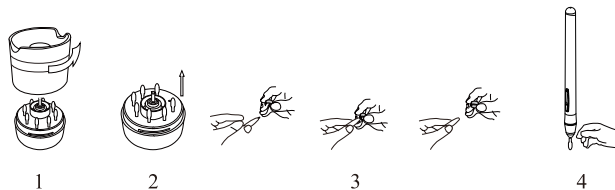


Image 2-2: Replacing the pen tip

- 1.Hold the upper half of the pen stand and twist counterclockwise to remove it.
- 2.Remove the pen clip located in the center of the lower pen stand.
- 3.Use the pen clip to grip the pen tip and pull it out of the stylus.
- 4.Push the new pen tip into the stylus.

{III.Driver Installation}

NOTES:

- (1). Disable any antivirus or firewall software before beginning the installation.
- (2). Uninstall any existing tablet software before attempting to install the Star 03 driver. Other tablet drivers will conflict with the Star 03 driver or prevent installation entirely.
- (3). You may install the Star 03 driver with the included CD or download the latest driver version from the XP-Pen website (www.xp-pen.com). If you choose to download the driver from the website, be sure to extract the .zip file contents before running *install.exe*.

a.Windows

- (1). Connect the Star 03 to your computer via the included USB cable.
- (2). Insert the included driver CD into your computer's CD/DVD drive and follow the on-screen instructions. If setup does not begin automatically, open the disc contents manually and run *setup.exe* or *install.exe*.
- (3). After a successful installation, the driver's icon (🖊️) will appear in your system tray. If the icon is not present, uninstall the driver, reboot, and repeat step 2.

b.Mac

- (1). Connect the Star 03 to your computer via the included USB cable.
- (2). Insert the included driver CD into your computer's CD/DVD drive.
- (3). Open the CD's file list. Open the *Mac Driver* folder, then run *PenTablet.pkg*.
- (4). Follow the on-screen instructions, then reboot your computer. Skip *Keyboard Setup Assistant*.



Image 3-1: Keyboard Setup Assistant

{IV.Driver Settings UI}

a.Windows

The Star 03's driver settings can be opened two ways:

- (1). Double-click the system tray icon (🖊️)
- or
- (2). Open the Control Panel, then double-click *Tablet Settings*.

1.Info



Image 4-1: Info

The *Info* tab displays the current downloaded driver version. The driver's system tray icon and support for Windows Ink can also be toggled on and off here.

2.Monitor Setting

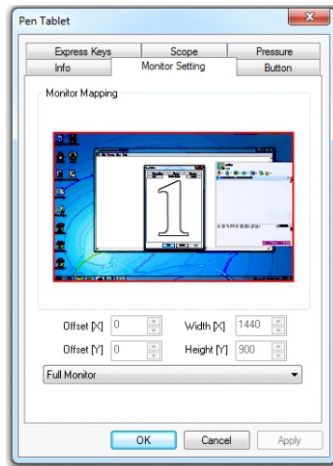


Image 4-2: Monitor Setting

The *Monitor Setting* tab allows you to configure your tablet for use with single or dual monitors.

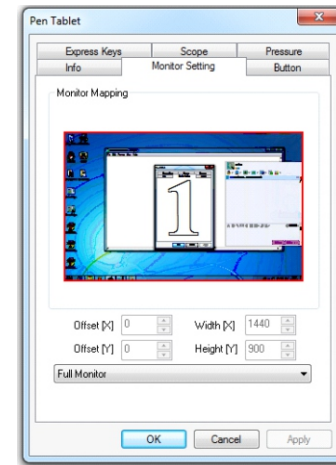


Image 4-3: Example of a single-monitor setup

The Star 03 driver will automatically detect dual monitors. Your tablet can be used across both monitors.

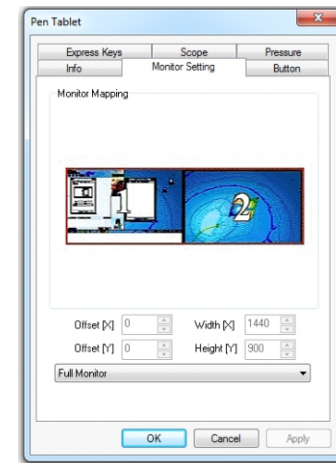


Image 4-4: Example of a dual-monitor setup

If only one monitor is selected, your tablet input will be limited to only that monitor.

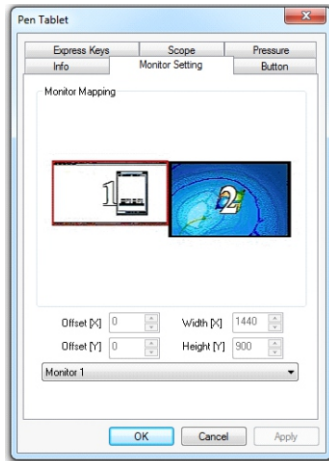


Image 4-5: The tablet driver set up for use on one monitor.

You may also modify your on-screen working area in this tab. Functionality may be limited by your computer's hardware.

3.Button

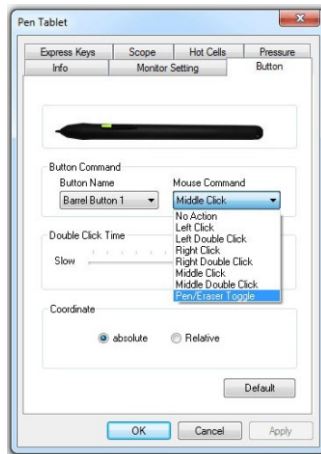


Image 4-6: Button

In the *Button* tab, you may customize the functions of the pen's barrel buttons by selecting the button in the *Button Name* menu and assigning your desired command under *Mouse Command*. Under *Coordinate*, you may choose between *absolute* and *relative* modes. *Relative* mode allows the pen to function as a traditional mouse. For standard tablet use, select *absolute* mode. You may also adjust the quickness required between pen taps to register as a double-click.

NOTE:

Tapping your tablet with the stylus pen functions as a left click.

4.Express Keys

In the *Express Keys* tab, you may edit the functions of the Star 03's shortcut keys.

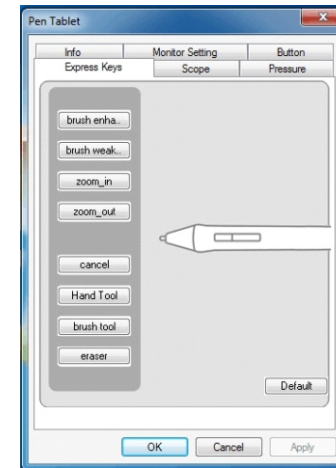


Image 4-7: Express Keys

5.Scope

In the *Scope* tab, you may adjust the tablet's on-screen working area to your preferred size and location.

Pen Area Dimensions:

Indicates the current height and width of the tablet's on-screen working area. You may type exact dimensions here.

Pen Area Offset:

Indicates the distance between the on-screen work area and the edges of the display. You may type exact dimensions here.

Full area:

Selects the largest possible on-screen working area.

Reserve edges:

Allocates buffer space along the outside borders of your on-screen working area.

Working Area Orientation:

Allows the tablet to be switched between right and left-handed use. For left-handed use, the Star 03 must be rotated 180 degrees.

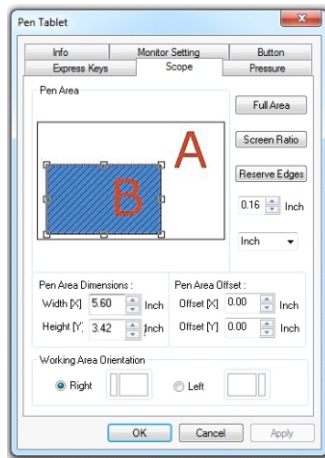


Image 4-8: Scope

6. Pressure

Use this tab to test your tablet's pen pressure and adjust its sensitivity. Lighter sensitivity means that digital pressure level will rise with less applied physical pressure.

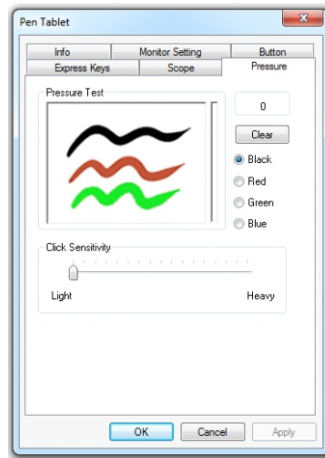


Image 4-9: Pressure

While drawing in the test area, the numerical value of your current pressure level will be shown above the *clear* button. Heavier pressure creates a thicker line.

b. Mac

To open the Star 03's driver settings, open Finder > Applications > Pen Tablet Setting.

1. Info

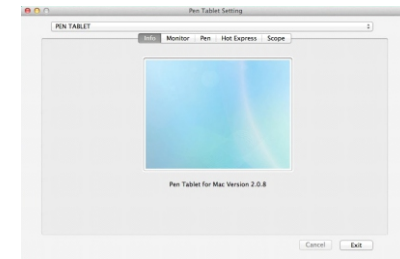


Image 5-1: Info

This tab displays the current version of your driver software.

2. Monitor

In the *Monitor* tab, you may select *Full Monitor*, *Portion of Monitor*, or *Display*.

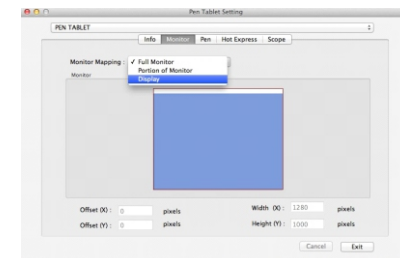


Image 5-2: Monitor

3. Pen

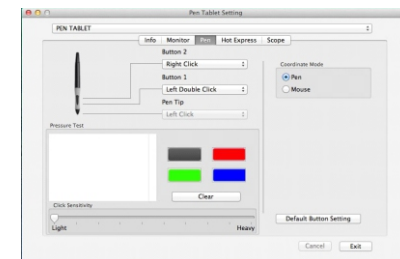


Image 5-3: Pen

In the *Pen* tab, you may choose your preferred functions for the stylus pen's barrel buttons from a list. You may also test the Star 03's pen pressure and adjust its sensitivity. Higher pressure creates a thicker line. Lighter sensitivity

means that digital pressure level will rise with less applied physical pressure. Under *Coordinate Mode*, you may choose between *Pen* and *Mouse* modes. *Mouse* mode allows the pen to function as a traditional mouse. For standard tablet use, select *Pen* mode. Click *Default Button Setting* to revert to manufacturer settings.

4.Hot Express

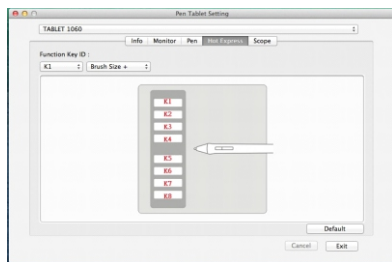


Image 5-4: Hot Express

In the *Hot Express* tab, you may choose your preferred functions for the Star 03's shortcut keys from a list.

5.Scope

In the *Scope* tab, you may adjust the tablet's on-screen working area to your preferred size and location. Under *Pen Area* is a visual representation of the current on-screen working area.

Pen Area Dimensions:

Indicates the current height and width of the tablet's on-screen working area. You may type exact dimensions here.

Pen Area Offset:

Indicates the distance between the on-screen work area and the edges of the display. You may type exact dimensions here.

Full area:

Selects the largest possible on-screen working area.

Screen ratio:

Adjusts the tablet's on-screen working area to match your monitor's resolution.

Reserve edges:

Allocates buffer space along the outside borders of your on-screen working area.

Working Area Orientation:

Allows the tablet to be switched between right and left-handed use. For left-handed use, the Star 03 must be rotated 180 degrees.

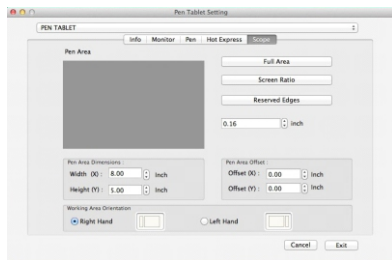


Image 5-5: Scope

{V.Driver Uninstallation}

a.Windows

- (1). Open [Start menu] → [All Programs/Apps] → [XP-Pen]. Click *Uninstall Driver*, then follow the on-screen instructions.
- OR
- (2). From the Start menu, open [Control Panel] → [Add/Remove Programs]. Find *Tablet Driver V8.0* and click *Uninstall*. Follow the on-screen instructions.

b.Mac

Open [Finder]→ [Application]→ [Touch Tablet], then click *Uninstall Pen Tablet Driver*. Follow the on-screen instructions.

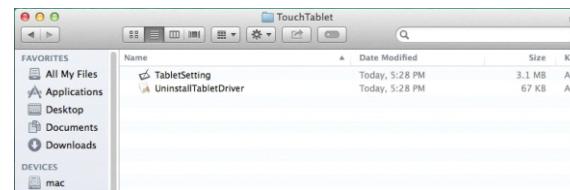


Image 6-1: Uninstall

NOTE:

When attempting to reinstall the Star 03 driver, be sure to reboot your computer after the uninstallation is complete.

{VI.FAQ}

(a). Where can I download the latest Star 03 driver?

- i. Latest driver releases can be downloaded on the XP-Pen website (www.xp-pen.com).

(b). How do I know that the Star 03 driver installed successfully?

- i. After installing the driver, the Star 03's driver icon should be visible in the system tray (Windows OS). Pen input will control the cursor and pressure sensitivity will be functional in the driver UI's *Pressure/Pen* tab.

(c). How do I determine if a problem is software or hardware related?

- i. Connect and install the Star 03 on a different computer. If the tablet functions properly on the new computer, you are experiencing a software issue—confirm that ALL tablet drivers (including the Star 03) are uninstalled and removed from your computer, then reinstall the Star 03.
- ii. The Star 03's indicator lights will help you determine if an issue is hardware-related. When functioning properly, the white status indicator light will light up when the stylus pen is in range of or touching the tablet's working area. If the light does not turn on under these conditions, you may be experiencing a hardware issue.

If you have any questions, please contact us at:

Skype: XP-Pen

Web: www.xp-pen.com

Email: service@xp-pen.com