



# Graphic Pen Display

## Artist 10S Manual

Windows 10,8,7 and Mac 10.8 or above



## Safety Precautions

This manual uses the following symbols to ensure that the XP-PEN Tablet is used correctly and safely. Be sure to read and observe the Safety Precautions.



**Do not use this product in a control system area that requires a high degree of safety and reliability.**

In such a system, this product could negatively affect other electronic devices and could malfunction due to the effect of those devices.



**Turn the power off in areas where use of electronic devices is prohibited.**

Turn the power off your tablet when onboard an aircraft or in any other location where use of electronic devices is prohibited, otherwise it may negatively affect other electronic devices in the area.

Unplug the USB connector from this product and turn the power off.



**Keep the product away from infants and young children.**

Accessories to this gadget may present a choking hazard to small children. Keep all accessories away from infants and young children.



## CAUTION

**Do not place this product on unstable surfaces.**

Avoid placing this product on unstable, tilted surfaces or any locations exposed to excessive vibrations. This may cause the tablet to fall or impact surfaces which can result in damage and/or malfunction to the tablet.

**Do not place heavy objects on top of this product.**

Do not place heavy objects on the product. Do not step on, or place your body weight on this product as this may cause damage.



**Avoid extreme high or low-temperature exposure to the XP-Pen tablet.**

Do not store this product in areas that drop below 5°C or above 40°C. Avoid locations with excessive temperature fluctuations. This may result in damage to the product and its components.



**Do not disassemble**

Do not disassemble or modify this product. Doing so may expose you to heat, fire, electric shock and injury.

Disassembling the product will void your warranty.



**Do not use alcohol for cleaning**

Never use alcohol, thinner, benzene or other mineral solvents that may discolor and cause deterioration to the product.



**Do not expose to water**

Be cautious of water and all liquids that may be near the tablet. Exposure to water or liquid could damage the product.



## CAUTION



**Avoid placing metallic objects and especially magnetic objects on the tablet.**

Placing metallic and/or magnetic objects on this product during operation may cause malfunction or permanent damage.



**Do not strike the pen against hard objects.**

Striking the pen against hard objects can cause damage to the pen.



**Avoid gripping the pen too tightly, and DO NOT use excessive weight/pressure on the Express Key button and pen.**

The stylus pen is a high-precision instrument. Avoid pressing too tightly on the Express Key button, and keep any objects from covering the pen to avoid potential damage. Keep the pen away from areas of high dust, contaminants, or any particulate matter that can effect or damage the pen.

## Limitation of Liability

1. XP-Pen shall in no event be liable for damages resulting from fires or earthquakes, including those caused by third parties and those arising from user misuse, abuse or neglect.
2. XP-Pen shall in no event be liable for incidental damages- including but not limited to loss of business income, interruption of business activities, corruption or loss of data – that arise from use or failure to use this product correctly.
3. XP-Pen shall in no event be liable for damage resulting from uses not documented in this manual.
4. XP-Pen shall in no event be liable for damages or malfunction arising from the connection to other devices or use of third party software.

# Contents

## [I. Product Overview](#)

[Overview](#)

[Working area](#)

## [II. Stylus](#)

[Overview](#)

[Pen tip replacement](#)

## [III. Connecting the Artist 10S](#)

## [IV. Driver Installation](#)

[Windows](#)

[Mac](#)

## [V. Driver Settings UI](#)

[Windows](#)

[Mac](#)

## [VI. Driver Uninstallation](#)

[Windows](#)

[Mac](#)

## [VII. FAQ](#)

# { I. Product Overview }

## Overview

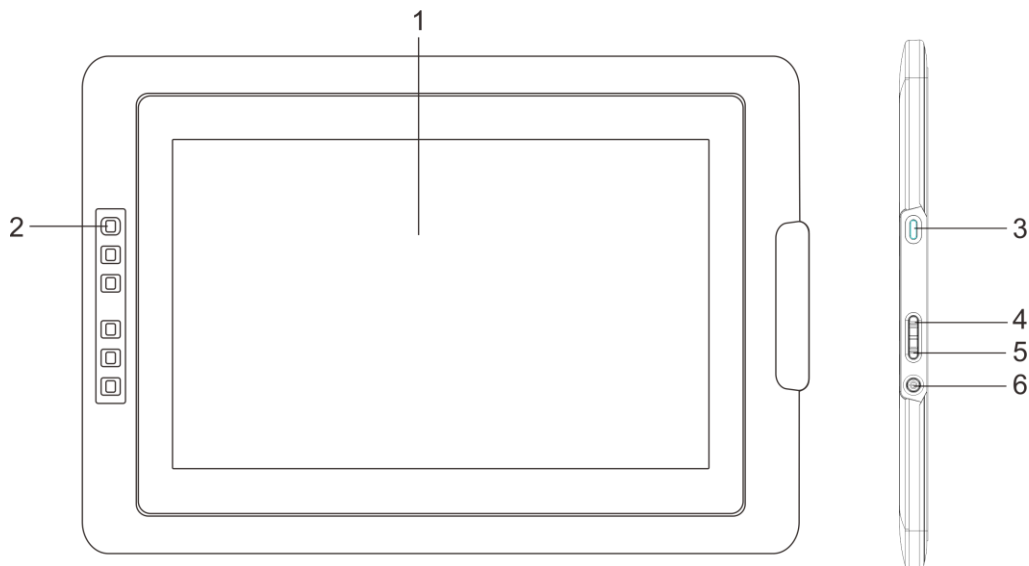


Image 1-1: Overview

- (1) Working area
- (2) Express keys
- (3) USB port
- (4) Brightness up
- (5) Brightness down
- (6) Power
  - a. On; Blue: The Artist 10S is connected to your computer and powered on.
  - b. Off: The Artist 10S is powered off.

## Active area

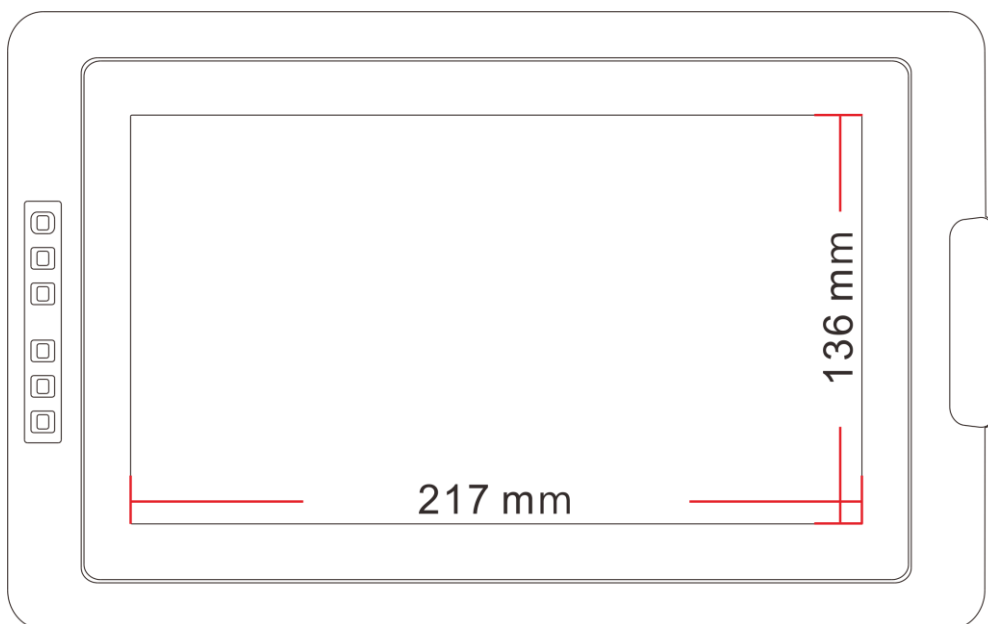


Image 1-2: Active area

## { II. Stylus }

### Overview

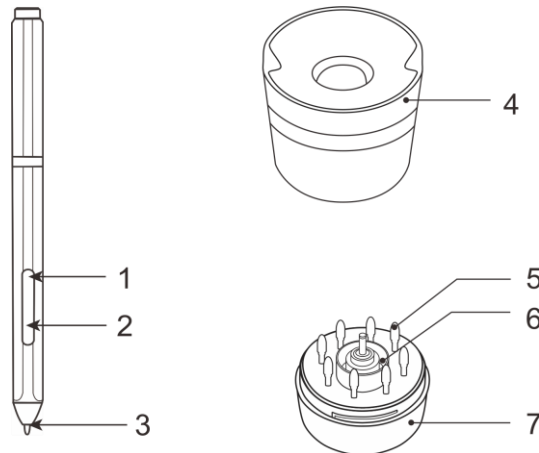


Image 2-1: Stylus overview

- (1). Barrel button 2
- (2). Barrel button 1
- (3). Pen tip
- (4). Upper pen stand
- (5). Spare pen tips
- (6). Pen clip
- (7). Lower pen stand

### Pen tip replacement

1. Hold the upper half of the pen stand and twist counterclockwise to remove it.
2. Remove the pen clip located in the center of the lower pen stand.
3. Use the clip to grip the pen tip and pull it out of the stylus.
4. Push the new pen tip into the stylus.

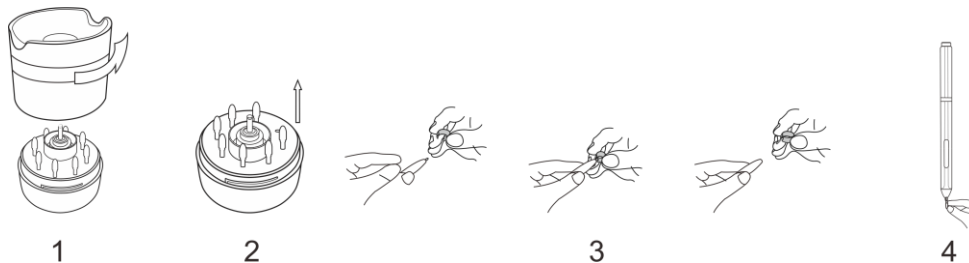


Image 2-2: Pen tip replacement

## { III. Connecting the Artist 10S }

#### Notes:

- (1). Two USB cords are included with the Artist 10S. The RED USB cord comes in two separate sections which must be connected before use.
- (2). The RED USB cord can be plugged into your computer or into a wall outlet through the extender cable. The other USB cord must be plugged into your computer.

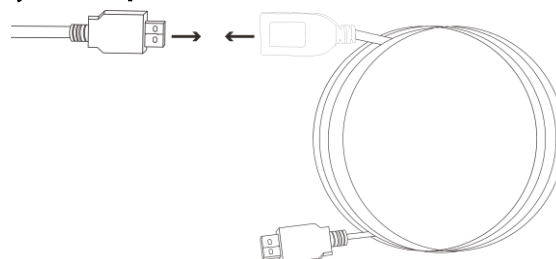


Image 3-1: Connecting the extra USB cable

1. Plug the USB cord into the Artist 10S
2. Plug the Artist 10S HDMI and USB cords into your computer
3. Plug the long, 2-part USB power cord into your computer or into a wall outlet. If your tablet does not work correctly while the power cord is connected to your computer, please plug the cord into the wall outlet instead.

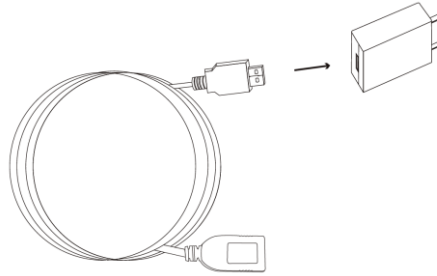


Image 3-2: Connecting

#### Notes:

**If your tablet displays a “No Signal” error message:**

- (1). **Unplug the Artist 10S USB and HDMI cord, then plug it back in. Ensure the cord is connected well. Reboot your computer, then turn the Artist 10S off and back on.**
- (2). **Test the Artist 10S on a different computer to check for hardware issues.**
- (3). **If the error persists on different computers, please contact XP-Pen support.**

## { IV. Driver Installation }


#### Supported operating systems:

Windows 10, 8, or 7  
Mac OS X 10.8 or above

#### NOTES :

- (1). **Disable any antivirus or firewall software and close any non-essential background software before beginning the installation. Some software, such as OneDrive and Dropbox, may monopolize important files and prevent a successful installation. On Windows computers, check the system tray on the bottom-right of the screen and close any software unrelated to your computer hardware.**
- (2). **Uninstall any existing tablet software and restart your computer before attempting to install the Artist 10S driver. Other tablet drivers may conflict with the Artist 10S driver or prevent installation entirely.**
- (3). **You can download the latest driver version from the XP-Pen website ([www.xp-pen.com](http://www.xp-pen.com)). Be sure to extract the “.zip” file contents before running “.exe” or “.pkg”.**
- (4). **The Artist 10S’ maximum resolution is 1280x800.**

## Windows

- (1). Connect the Artist 10S to your computer using the included HDMI & USB cords and turn on the tablet.
- (2). Please download the Artist 10S latest driver from the support section of our website, [www.xp-pen.com](http://www.xp-pen.com)
- (3). Extract the “.zip” folders contents before running “.exe” file.
- (4). After a successful installation, the driver’s icon (  ) will appear in your system tray. If the icon is not present, uninstall the driver, reboot, and repeat step 2.
- (5). (Recommended) Open [Control Panel] > [Display], then set Change the size of text, apps, and other items to 100%.

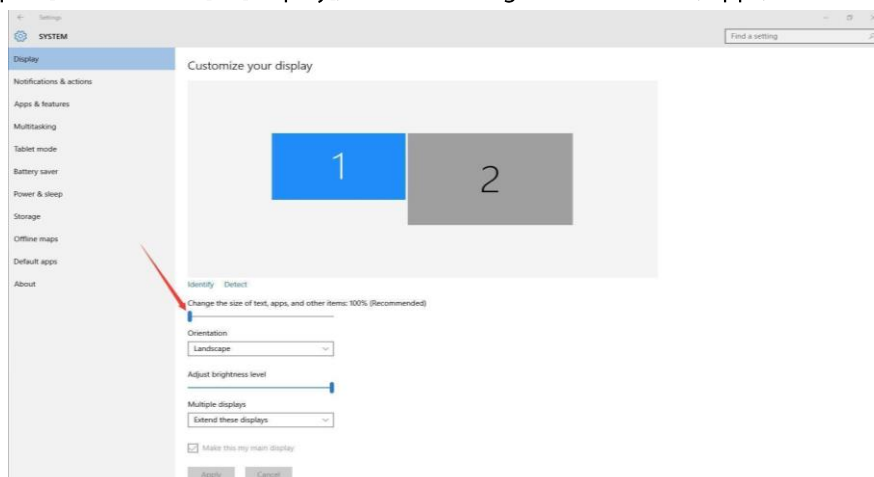


Image 4-1: Display setting

- (6) In [Control Panel] > [Display], change your dual monitor settings to Extend mode/Extend these displays.
- (7) In Extend mode, set your Artist 10S to monitor 2 and choose a resolution of 1280x800 or 1280x720.
- (8) In Duplicate these displays mode, set both of your monitors' resolutions to 1280x800 or 1280x720.

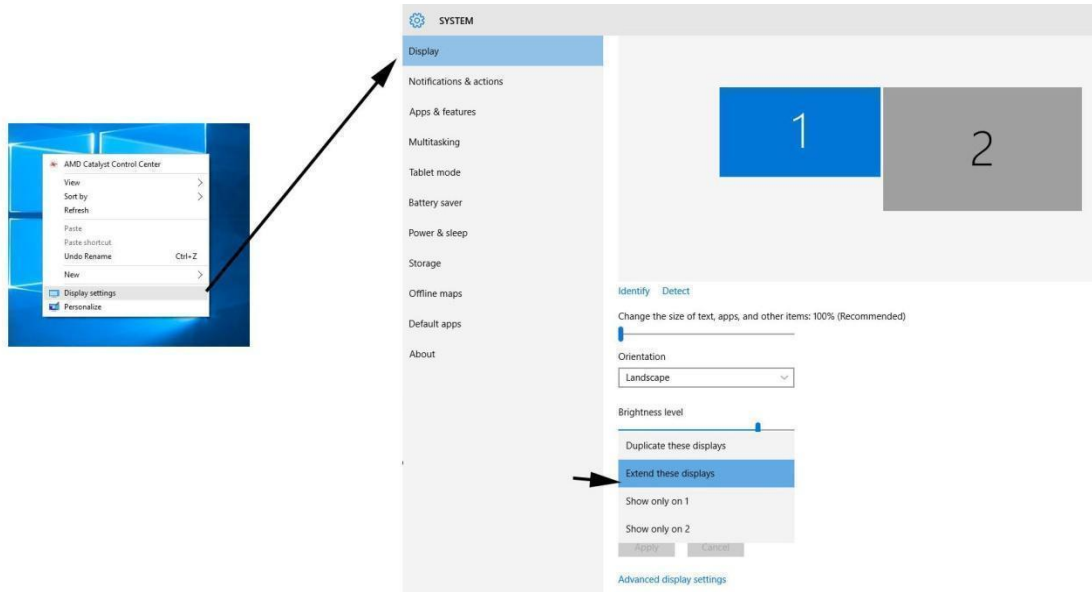


Image 4-2: Extend mode

- (9) Apply and exit.
- (10) Double-click the driver's system tray icon to open your tablet settings, then set your Artist 10S to Monitor 2 in the "Monitor Settings" tab, click OK then exit.

**Note: To use Paint Tool Sai (SAI) with the Artist 10S, please open your computer's Display setting and set "Size of text, apps, etc" to 100%.**

## Mac

- (1) Connect the Artist 10S to your computer using the included HDMI & USB cords. Turn on the tablet.
- (2) Please download the Artist 10S latest driver from the support section of our website, [www.xp-pen.com](http://www.xp-pen.com)
- (3) Extract the ".zip" file contents before running ".pkg".



Image 4-3: Mac driver

- (4) If you run into the error message below, please complete the following steps:

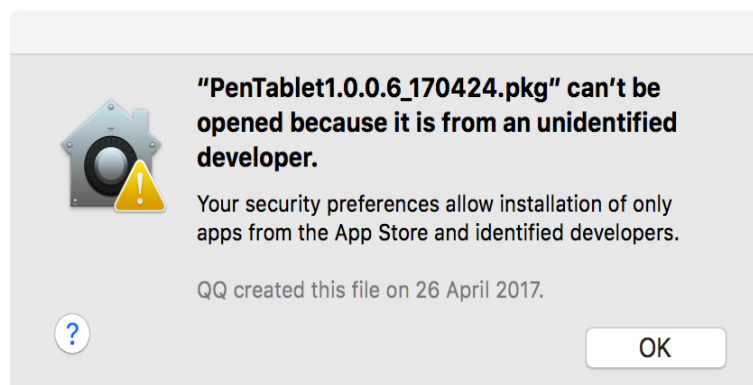


Image 4-4: Unidentified developer

- a. Open "System Preferences" then "Security & Privacy".

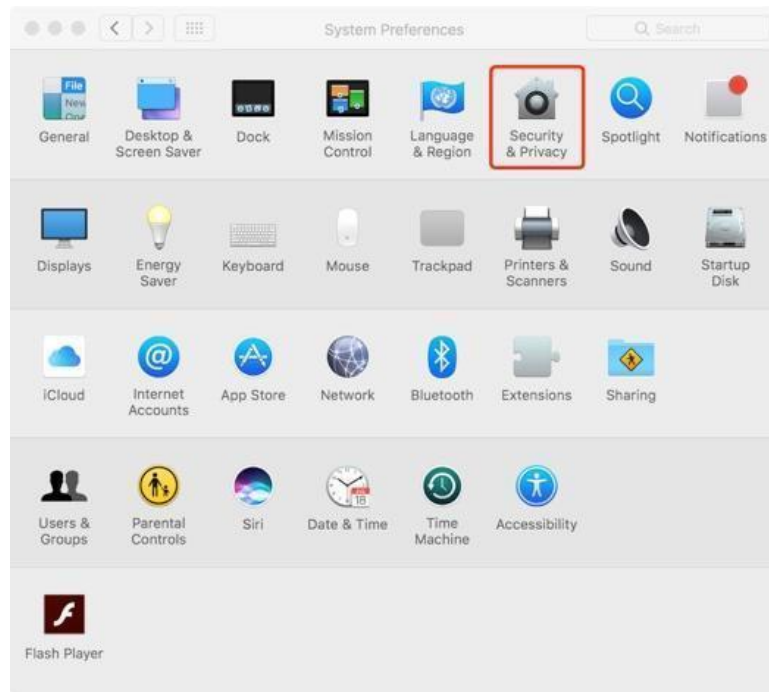


Image 4-5: Security & Privacy

b. Click "Open Anyway"

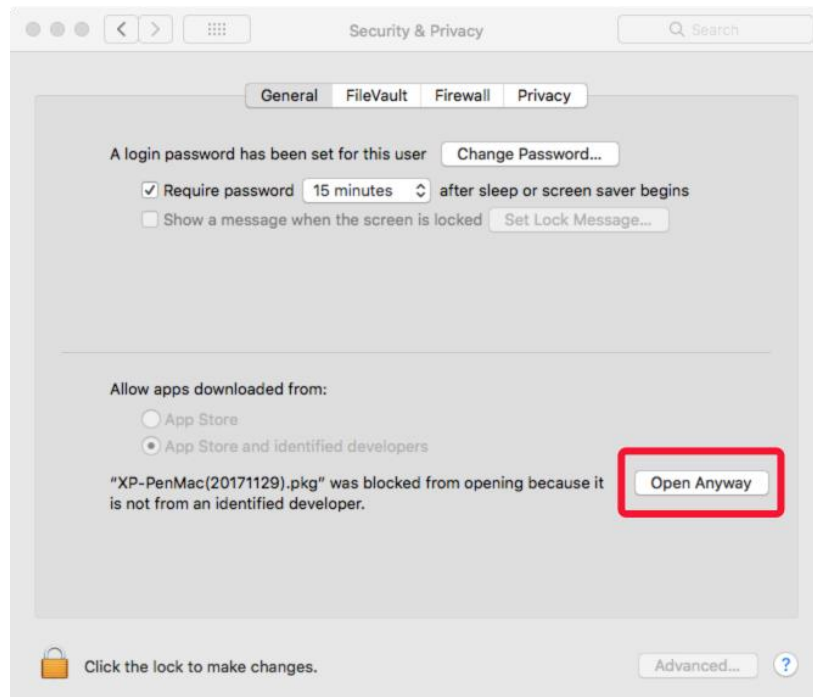


Image 4-6: Open Anyway

c. Input your username and password, then click "Unlock."

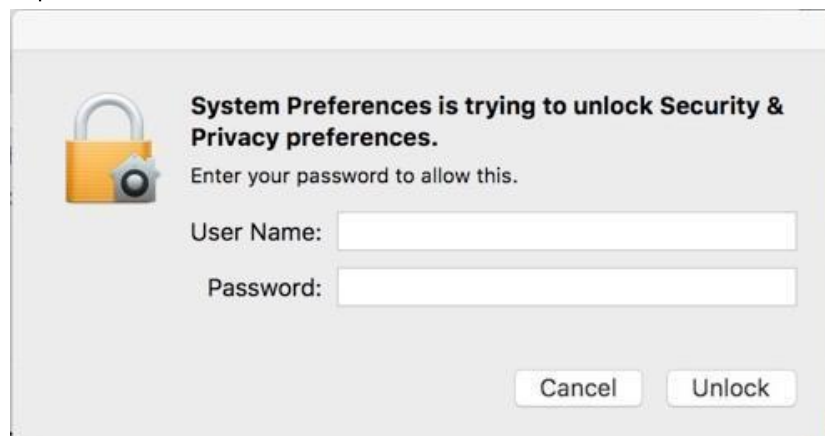


Image 4-7: Password



(5) Open [System Preferences] > [Display]. In the Display tab, set your resolution to Default for display.

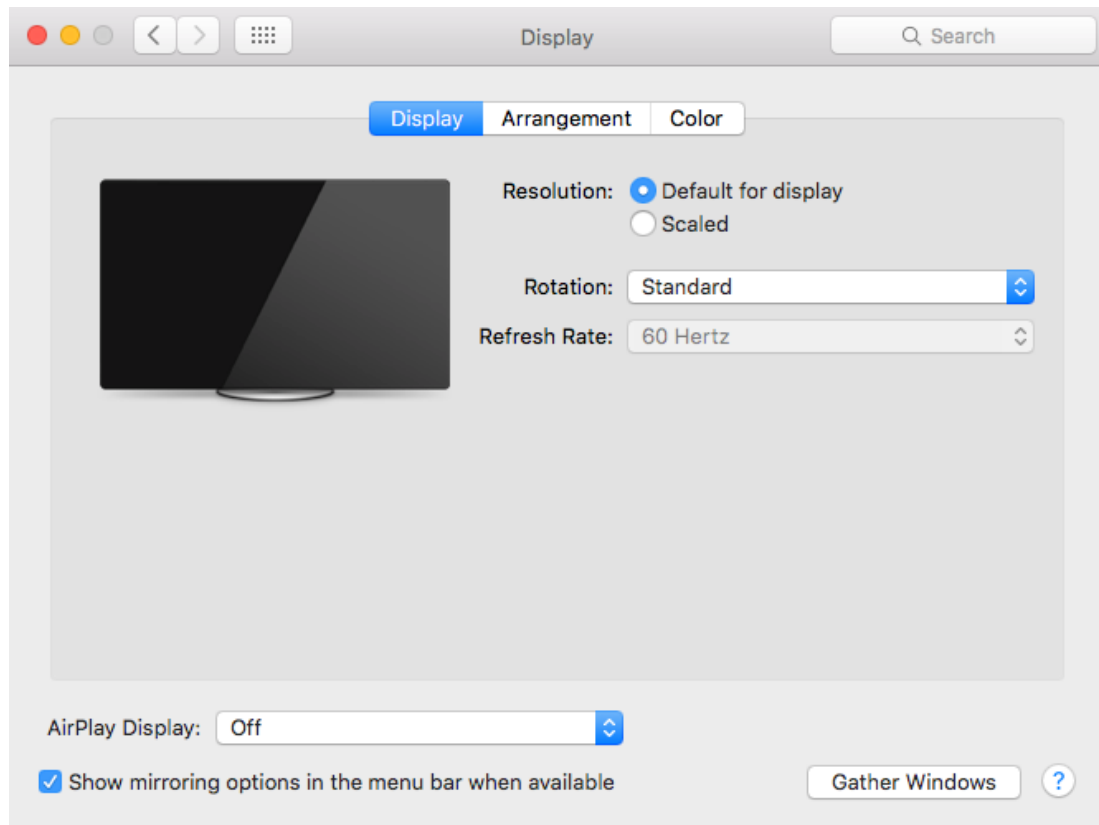


Image 4-8: Display

(6) In the Arrangement tab, you may choose to Mirror Displays. With Mirror Displays enabled, both monitors' resolutions should be set to 1280x800.

(6.1) Open [Finder] > [Applications] > [Touch Tablet] > [Pen Tablet Setting].

(6.2) In the Calibration tab, set Monitor Mapping to Color LCD.

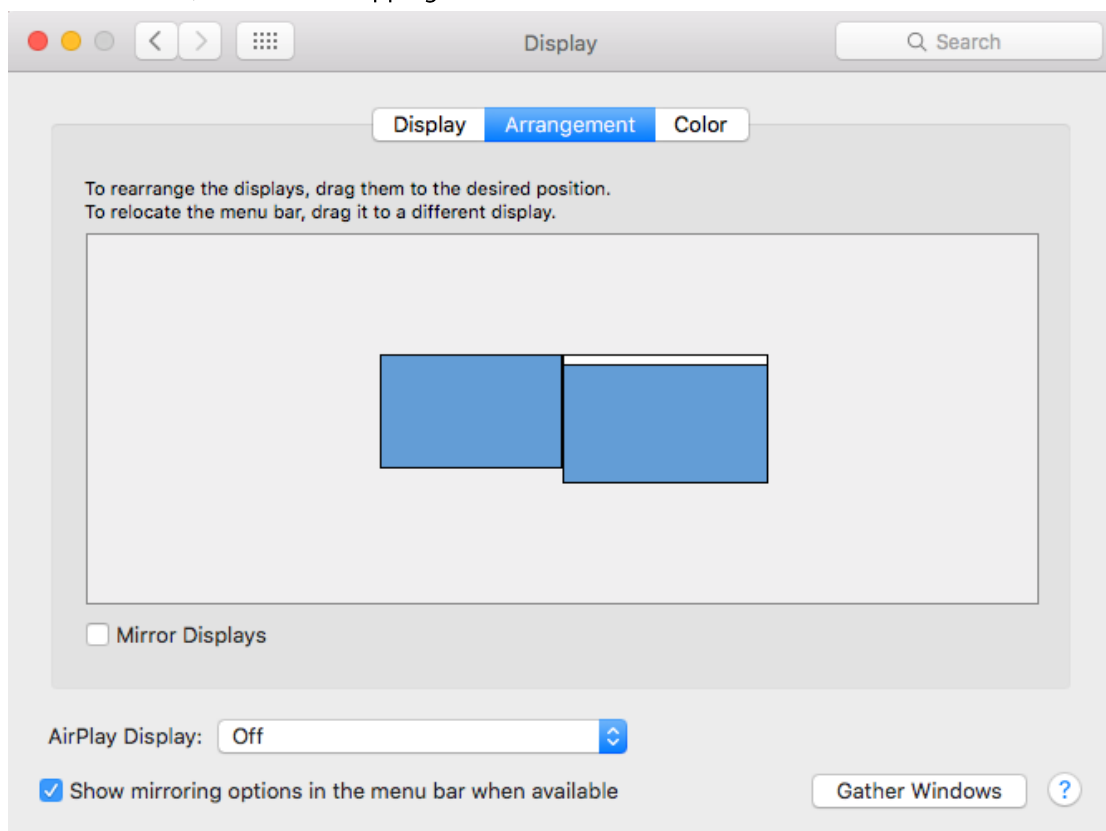


Image 4-9: Arrangement

(7) With Mirror Displays disabled, set your Artist 10S' resolution to 1280x800.

(7.1) Open [Finder] > [Applications] > [Touch Tablet] > [Pen Tablet Setting].

(7.2) In the Calibration tab, set Monitor Mapping to RTK.

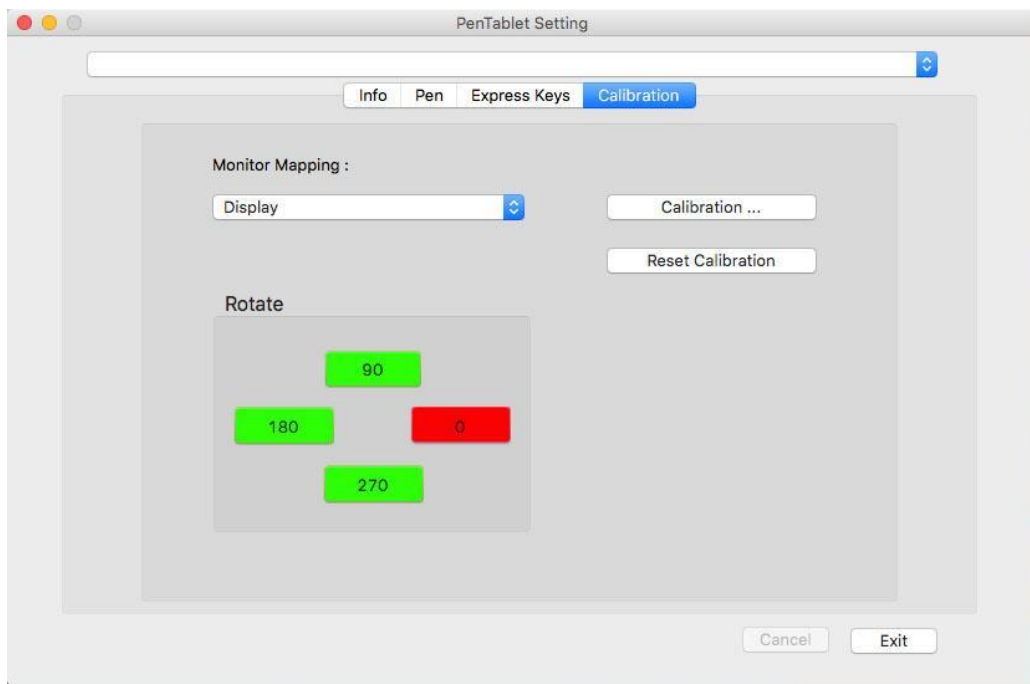


Image 4-10: Monitor

## { V. Driver Settings UI }

### Windows

Double-click the driver's icon (  ) in system tray.

#### Driver UI

##### 1. Info

The Info tab displays the current installed driver version.

Show Icon in System Tray and the Artist 10S' system tray icon can be toggled on and off here.

Supports Digital Ink capability can be toggled on and off here. Enabling this will allow support for Windows Ink and applications that run using Windows Ink.



Image 5-1: Info

## 2. Monitor Setting

This tab displays the active monitor currently selected for your tablet. Generally, this should be set to Monitor 2.

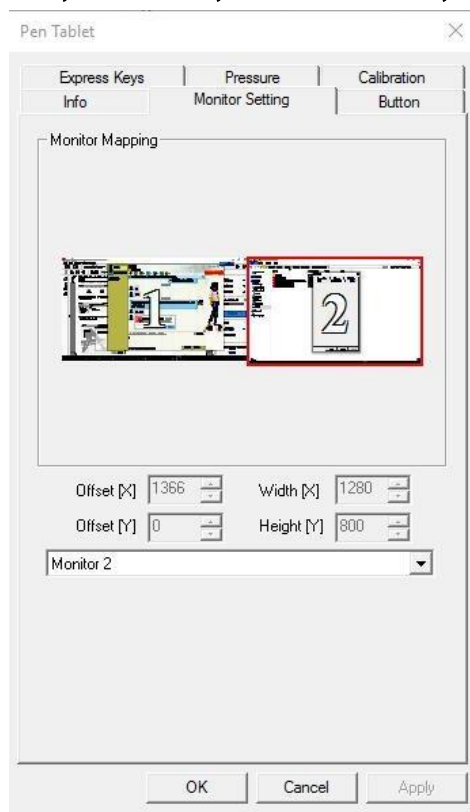


Image 5-2: Monitor Setting

## 3. Button

You may customize the functions of the pen stylus barrel buttons in this tab. All standard mouse functions are available. Click Default to revert to manufacturer settings.

Double Click Time adjusts the quickness required between pen taps to register as a double-click.

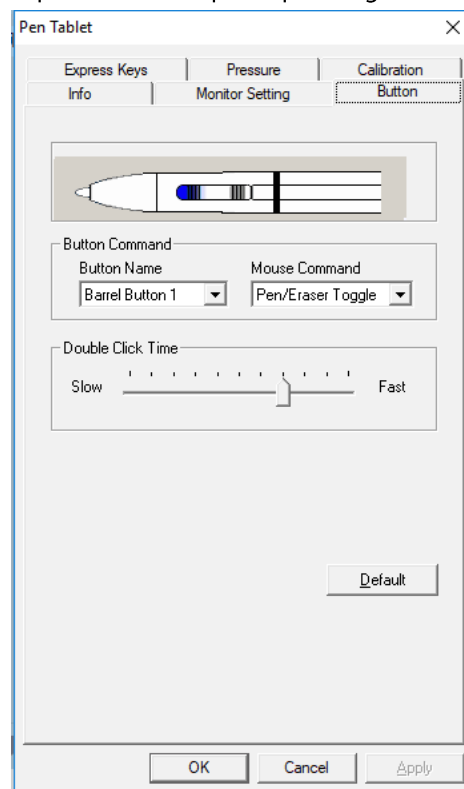


Image 5-3: Button

### Note:

#### Pen/Eraser Toggle

With the stylus in range of the Artist 10S' working area, press the assigned barrel button to toggle between pen and eraser modes in compatible drawing software. The current mode will briefly be displayed on your monitor.

## 4. Express Keys

### Notes:

- (a). The Artist 10S' express keys are designed to work with US English keyboards. Keys may not function correctly with the other keyboard languages.
- (b). By default, the Artist 10S express keys are mapped to standard Photoshop keyboard shortcuts. Keys can be customized to function efficiently in other software.

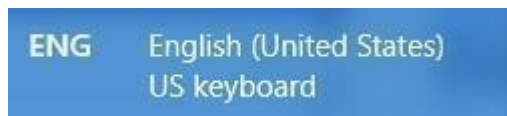


Image 5-4. Keyboard

The Artist 10S' shortcut keys can be customized in this tab.

Click Default to revert to manufacturer settings.

After clicking a shortcut key, you will be shown several tabs that may be edited.



Image 5-5. Express Keys

## 5. Pressure

The Pressure tab allows you to test your tablet's pen pressure and adjust its sensitivity. Lighter sensitivity means that digital pressure level will rise with less applied physical pressure.

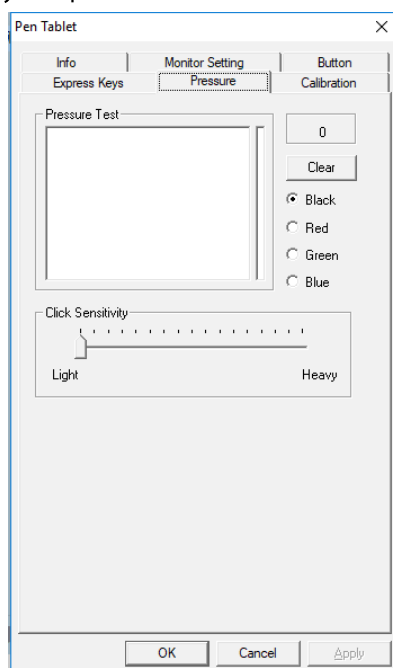


Image 5-6. Pressure

## 6. Calibration

The Calibration tab allows you to set up 4 and 9-point calibration for your tablet. You may also rotate the Artist 10S display in this tab.

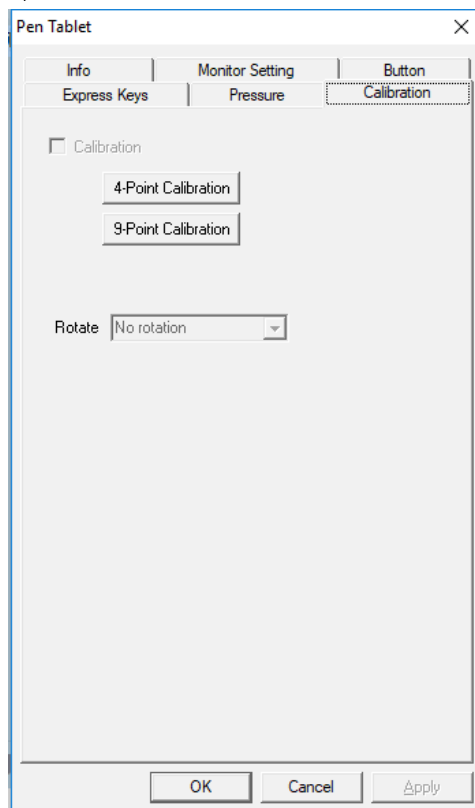


Image 5-7. Calibration

## Mac

To open the Artist 10S' driver settings, open Finder > Applications > PenTabletSetting.

### Driver UI

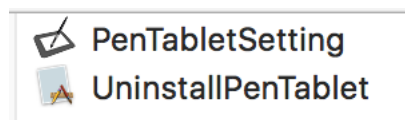


Image 5-8: Tablet Setting

### 1. Info

The Info tab displays the current installed driver version.

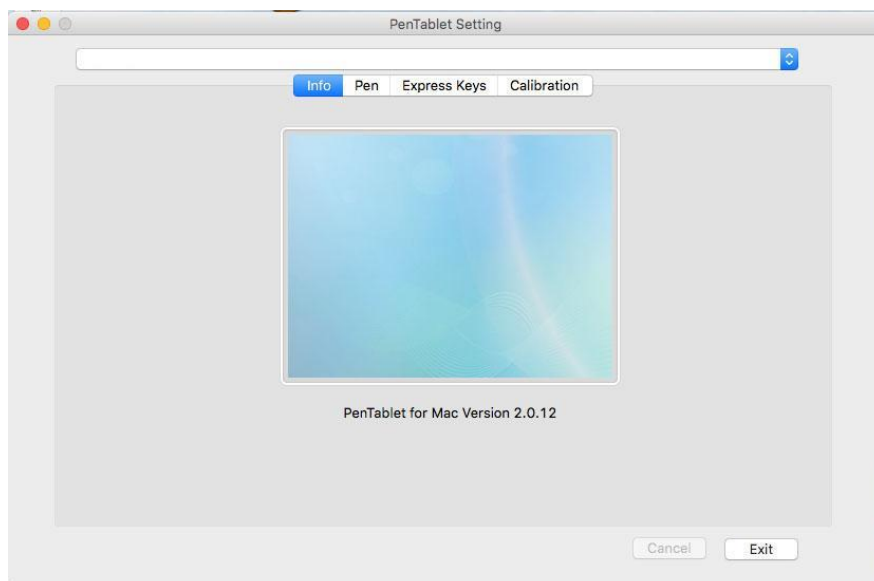


Image 5-9: Info

## 2. Pen

You may customize the functions of the pen stylus barrel buttons in this tab. All standard mouse functions are available. Click Default Button Setting to revert to manufacturer settings.

This tab also allows you to test your tablet's pen pressure and adjust its sensitivity. Lighter sensitivity means that digital pressure level will rise with less applied physical pressure.

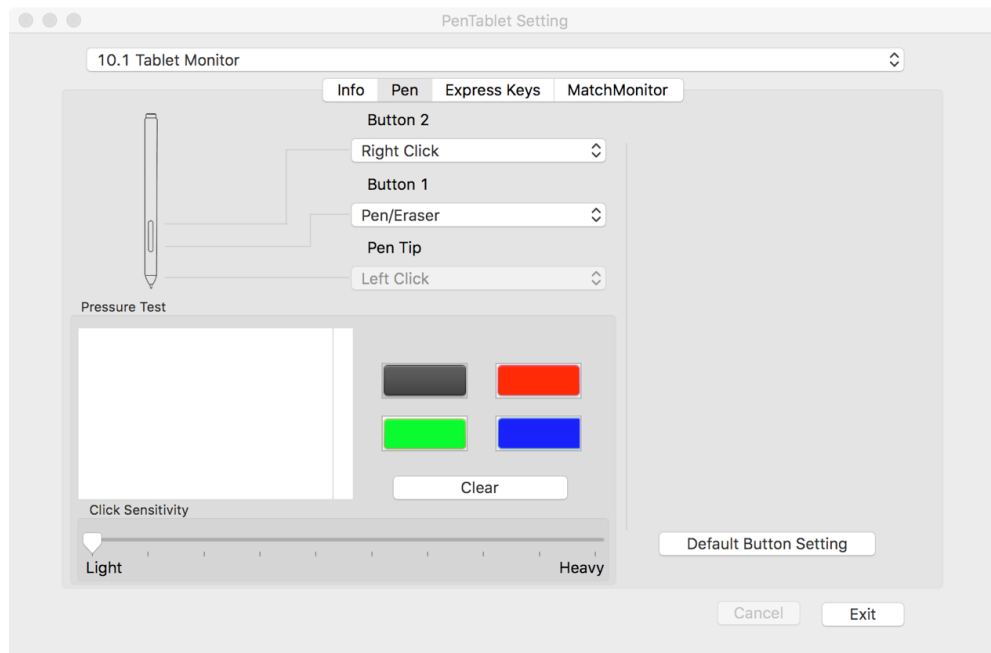


Image 5-10: Pen

### Note:

#### Pen/Eraser Toggle

**With the stylus in range of the Artist 10S' working area, press the assigned barrel button to toggle between pen and eraser modes in compatible drawing software. The current mode will briefly be displayed on your monitor.**

## 3. Express Keys

In the Express Keys tab, you may choose your preferred functions for the Artist 10S' shortcut keys. Use the "Reset Customer Defined" option to program custom keystrokes.

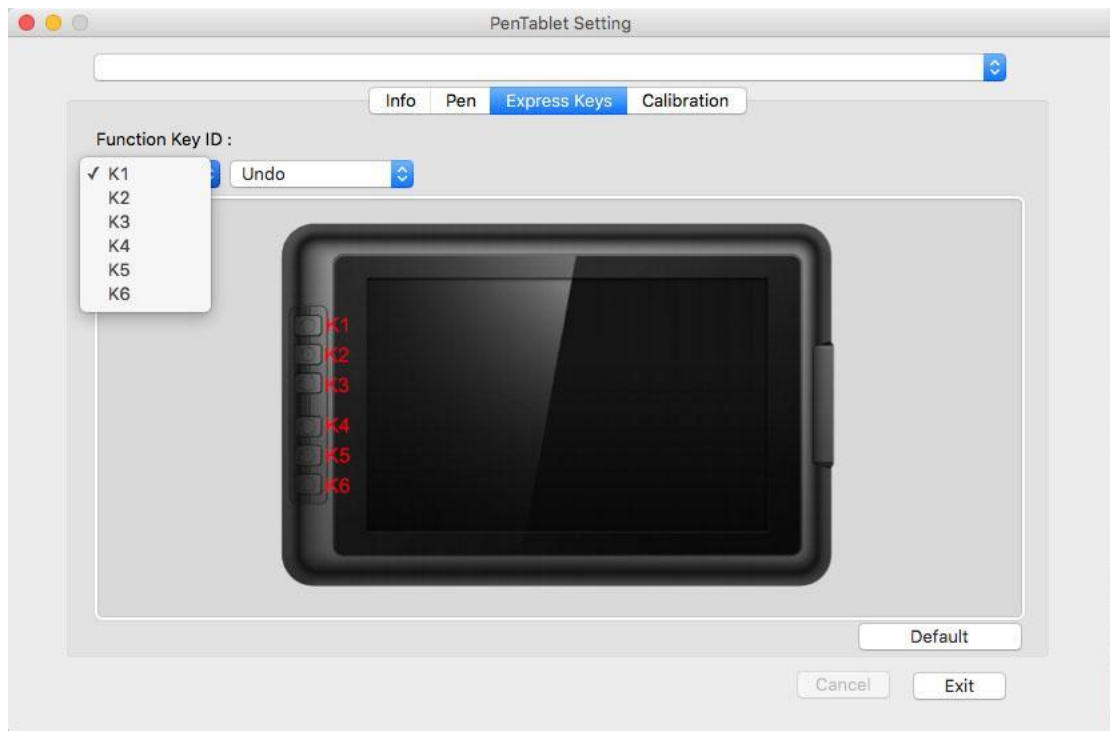


Image 5-11: Express Keys

## 4. Calibration

The Calibration tab allows you to calibrate your tablet or rotate your display.

To calibrate, click Calibration and follow the on-screen instructions.

Rotate: You may rotate the Artist 10S' display in this tab.

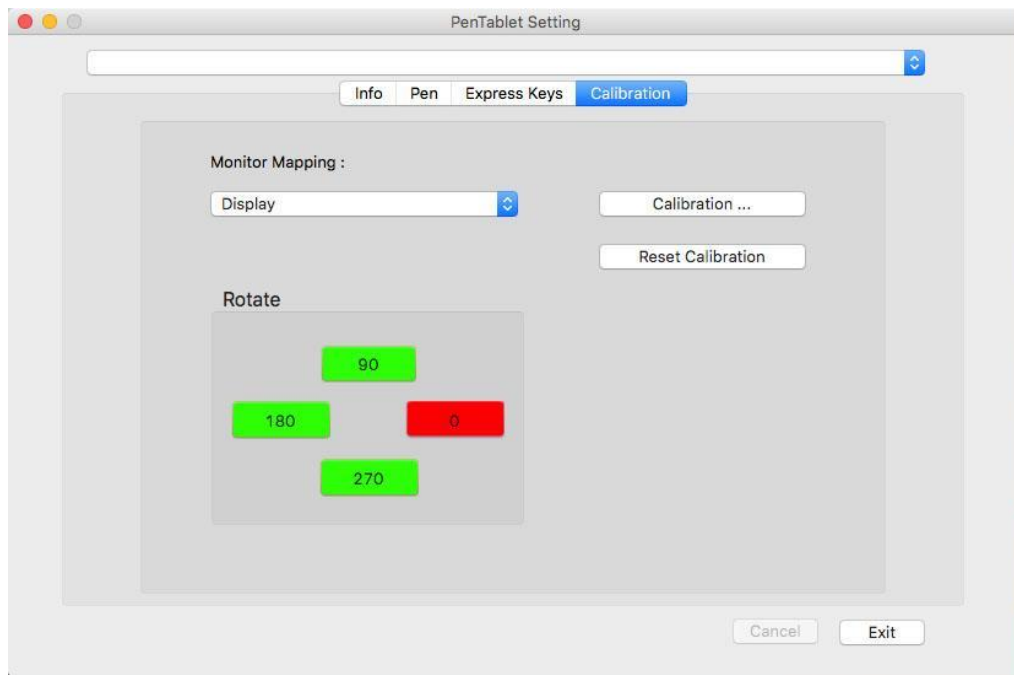


Image 5-12: Calibration

## { VI. Driver Uninstallment }

### Windows

In the Start menu, open [Settings] → [Apps & features]. Find “Pentablet” and click “Uninstall.” Follow the on-screen instructions.

### Mac

Open [Finder] → [Application] → [Pen Tablet], then click “Uninstall Pen Tablet” and follow the on-screen instructions.

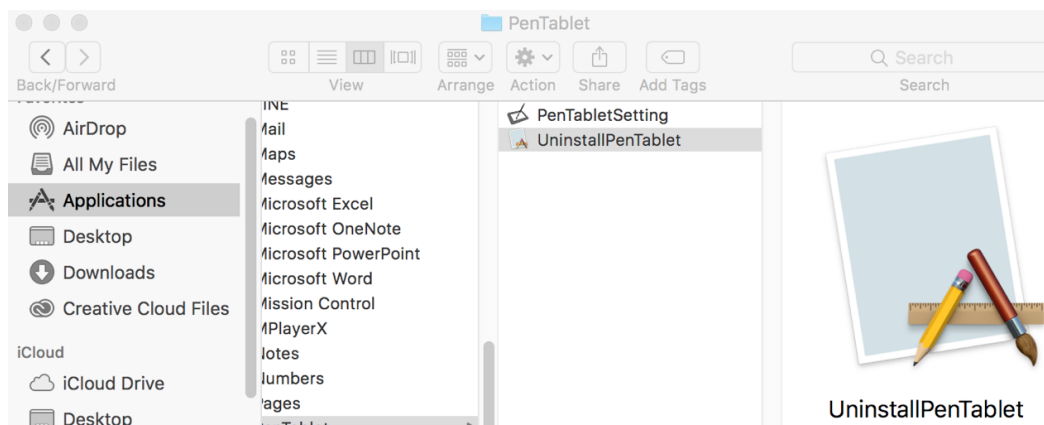


Image 6-1: Mac uninstall

#### NOTE:

**When attempting to reinstall the Artist 10S driver, be sure to reboot your computer after the uninstall is complete.**

## { VII. FAQ }


### 1. Where can I download the latest Artist 10S driver?

- Latest driver releases can be downloaded from our website ([www.xp-pen.com](http://www.xp-pen.com)).

**2. I can't use the stylus to control the cursor.**

- a. Please turn on your Artist 10S and make sure you can see the display.
- b. Please install the driver again then find the tablet icon in the system tray.
- c. Open it then test the pen pressure gauge inside
- d. If you can't test the pen pressure, please uninstall the driver and reboot. Make sure your computer login account has Administrator authority.
- e. The Artist 10S supports plug and play, please test your stylus pen performs basic functions such as cursor control and clicking before reinstalling the driver. If you have control, please temporarily disable your antivirus then go to the XP-Pen website to download the latest driver.
- f. When the download is complete, please unzip and extract the contents of the folder to run the .exe or .pkg installation file.
- g. Open the tablet setting again then make sure can you use the pen pressure on it

**3. How do I know that the Artist 10S driver installed successfully?**

- a. After installing the driver, the Artist 10S' driver icon  should be visible in your system tray on the bottom-right of your screen (Windows OS) and desktop. Pen input will control the cursor and pressure sensitivity will be functional in the driver.

**4. Why can't I use the pen pressure on the drawing software?**

- a. Please make sure the drawing software can support pen pressure
- b. Make sure you have the latest driver installed.
- c. Open the tablet setting and make sure you can test the pen pressure in it
- d. Enable the "Supports digital ink" function then click the ok button to exit. Open the drawing software again and test your pen pressure.
- e. Please note our tablets do not come with drawing software.

**If you have any questions, please contact us at:**

**Skype: XP-Pen**

**Web: [www.xp-pen.com](http://www.xp-pen.com)**

**Email: [service@xp-pen.com](mailto:service@xp-pen.com)**