



Artist 10S Quick Guide

Windows 10,8,7 and Vista Mac 10.7 or above

English / Русский язык / 日本語 / 中文 /
Deutsch / 한국어 / Español / Français / Italiano



Web site: www.xp-pen.com
Mail: service@xp-pen.com

Please contact us with any questions

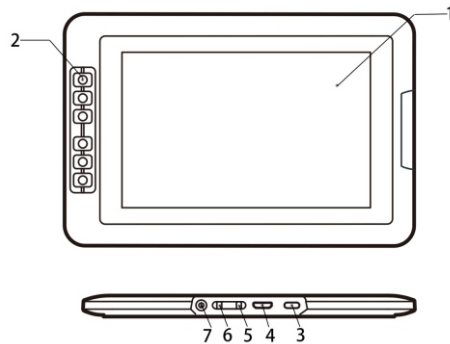


Designed by XPPEN Technology CO. in California, Assembled in China

www.xp-pen.com

Thank you for purchasing the XP-Pen tablet. Our product quick guide currently supports English, Russian, Japanese, German, Korean, Chinese, Italian, Spanish, and French. We apologize if your preferred language is not supported.

{I. Product Overview}



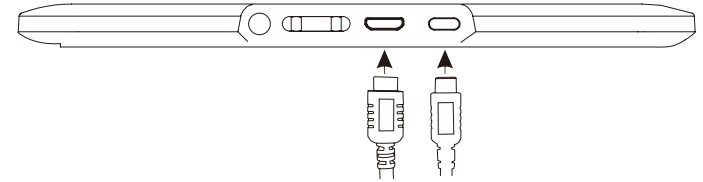
- (1). Working area
- (2). Express keys
- (3). Type-C USB port
- (4). HDMI port
- (5). Brightness up
- (6). Brightness down
- (7). Power

{II. Connecting the Artist 10S}

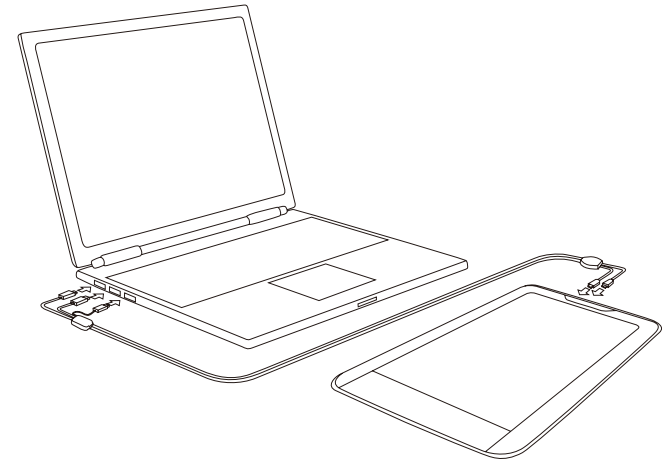
Notes:

- a. Two USB cords are included with the Artist 10S. The longer of the two comes in two separate sections which must be connected before use.
- b. The longer USB cord can be plugged into your computer or into a wall outlet. The short USB cord must be plugged into your computer.

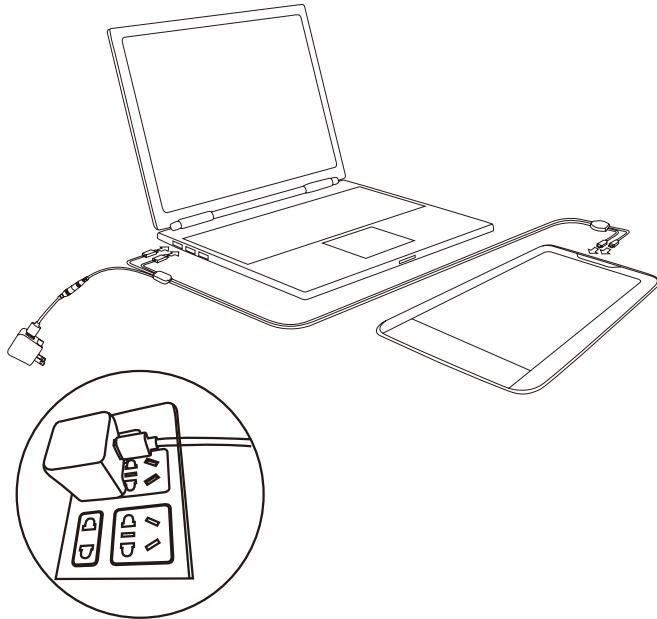
- (1). Plug the included HDMI and Type-C USB cords into the Artist 10S.



- (2) Plug the shorter of the Artist 10S's USB cords into your computer.



- (3). The longer USB cord can be plugged into your computer or into a wall outlet; if the Artist 10S will not power on with this cord plugged into your computer, it must be plugged into a wall outlet instead.



Notes:

If your tablet displays a "No Signal" error message:

- Unplug the Artist 10S's HDMI and USB cords, then plug them back in. Ensure that each cord is connected well. Reboot your computer, then turn the Artist 10S off and back on.
- Test the Artist 10S on a different computer to check for hardware issues.
- If the error persists on different computers and (a) does not solve it, contact XP-Pen support.

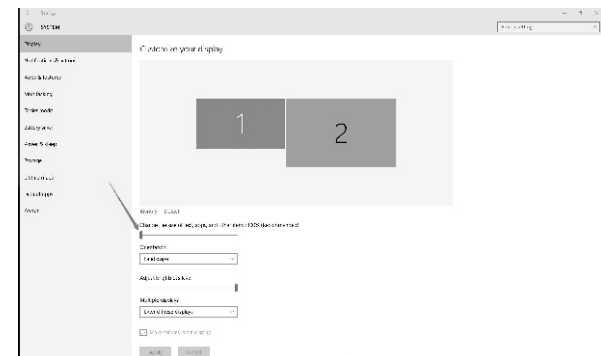
{III. Driver installation}

Notes:

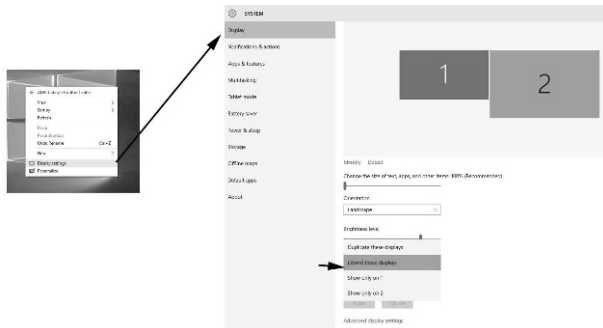
- With a computer set to 16:10 aspect ratio, the Artist 10S's maximum resolution is 1280x800.
- With a computer set to 16:9 aspect ratio, the Artist 10S's maximum resolution is 1280x720.
- The Artist 10S does not support resolutions higher than 1280x800.
- Disable any antivirus or firewall software before beginning the installation.
- Uninstall any existing tablet software before attempting to install the Artist 10S driver. Other tablet drivers will conflict with the Artist 10S driver or prevent installation entirely.
- You may install the Artist 10S driver with the included CD or download the latest driver version from the XP-Pen website (www.xp-pen.com). If you choose to download the driver from the website, be sure to extract the .zip file contents before running "install.exe."

Windows driver installation

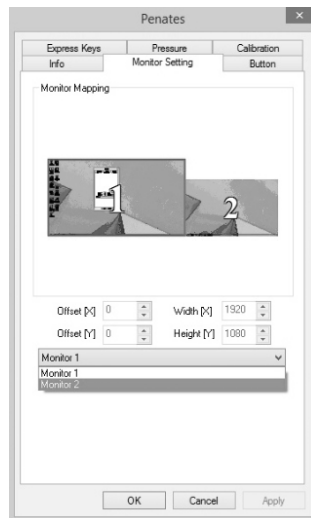
- Connect the Artist 10S to your computer using the included HDMI & USB cords. Turn on the tablet.
- Insert the included driver CD into your computer's CD/DVD drive and follow the on-screen instructions. If setup does not begin automatically, open the disc contents manually and run "setup.exe" or "install.exe."
- After a successful installation, the driver's icon (🖱️) will appear in your system tray. If the icon is not present, uninstall the driver, reboot, and repeat step 2.
- (Recommended) Open [Control Panel] > [Display Settings], then set "Change the size of text, apps, and other items" to 100%.



- (5). Change your dual monitor settings to "Extend mode/Extend these displays."
- (6). In "Extend" mode, set your Artist 10S to "Monitor 2" and choose a resolution of 1280x800 or 1280x720 (depending on the aspect ratio of monitor 1).



- (7). Apply and exit.
- (8). Click the driver's system tray icon to open your tablet settings. Set your Artist 10S to "Monitor 2" in the "Monitor Setting" tab and click "Apply."



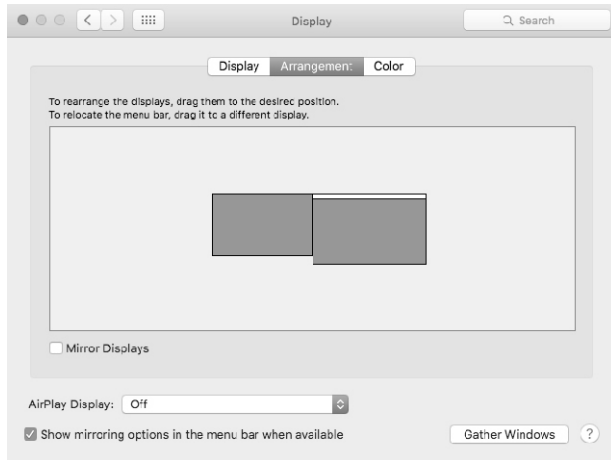
- (9). You may test your tablet's pressure sensitivity in the "Pressure" tab. If the Artist 10S responds to pressure here, its pressure sensitivity is functional.

Mac driver installation

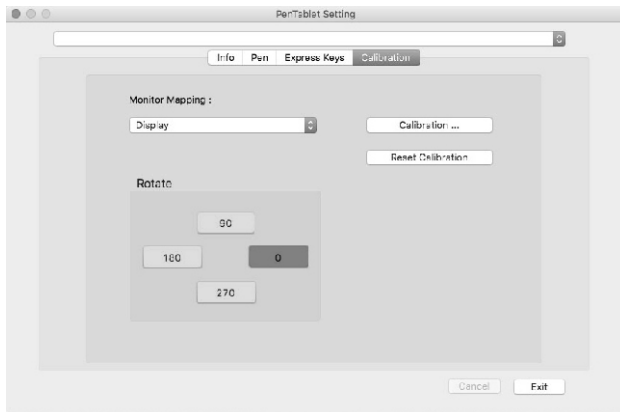
- (1). Connect the Artist 10S to your computer using the included HDMI & USB cords. Turn on the Artist 10S.
- (2). Insert the included driver CD into your computer's CD/DVD drive.
- (3). Open the CD's file list. Open the "Mac Driver" folder, then run "PenTablet.pkg."
- (4). Follow the on-screen instructions, then reboot your computer.
- (5). Open [System Preferences] > [Display]. In the "Display" tab, set your resolution to "Default for display."



- (6). In the "Arrangement" tab, disable "Mirror Display" and set the Artist 10S to "Monitor 2." Set the tablet's resolution to 1280x800 or 1280x720 (depending on monitor 1's aspect ratio).



- (7). Open [Finder] > [Applications] > [Touch Tablet] > [Pen Tablet Setting].
- (8). Click the "Calibration" tab. Set "Monitor Mapping" to "Monitor 2."



- (9). Open the "Pen" tab. Here you can test the Artist 10S's pressure sensitivity. If your tablet responds to pressure here, its pressure sensitivity is functional.

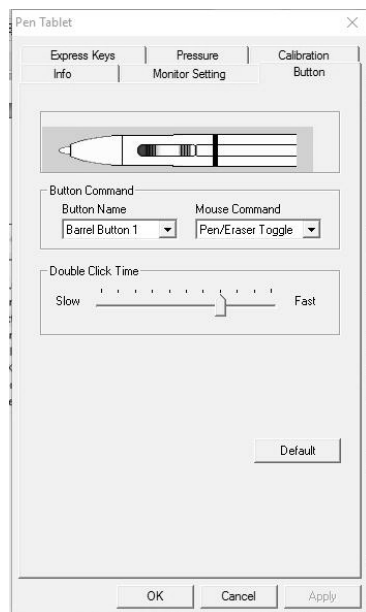
{IV. Express keys}

The Artist 10S's express keys can be customized in the driver settings UI. See the full manual for details.



{V. Pen/Eraser toggle}

With the stylus in range of the tablet's working area, clicking the first barrel button will, by default, toggle between pen and eraser modes. The current selected mode will briefly appear in the bottom middle of your display.



If you have any questions, please contact us at:

Skype: XP-Pen

Web: www.xp-pen.com

Email: service@xp-pen.com