



Star 05 Quick Guide

English、Русский язык、日本語、中文、
Deutsch、한국어、Español、Français



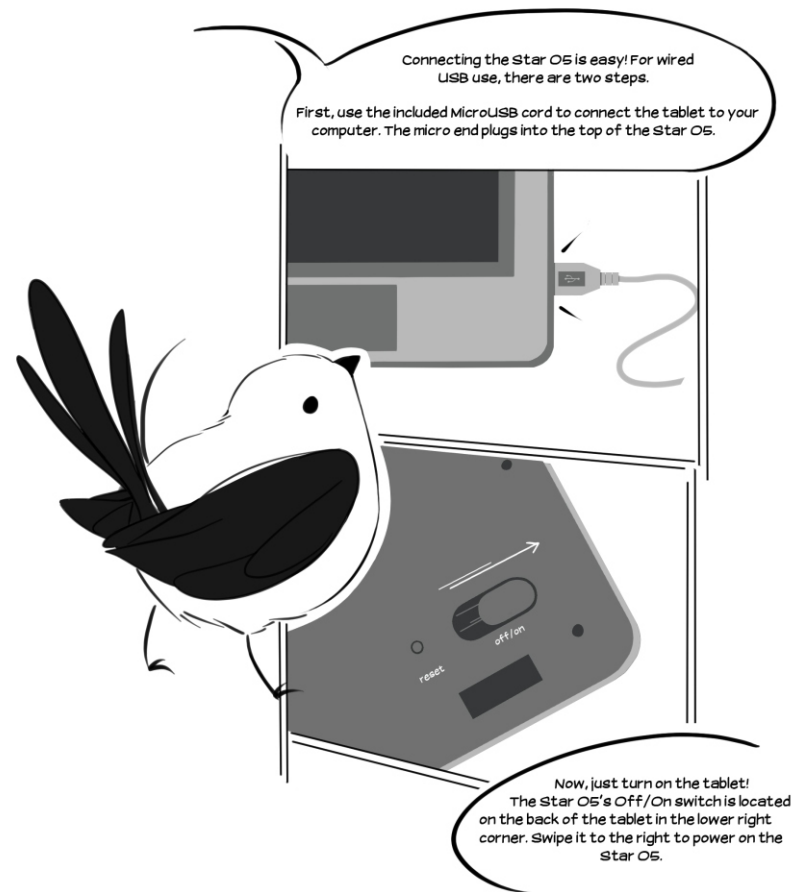
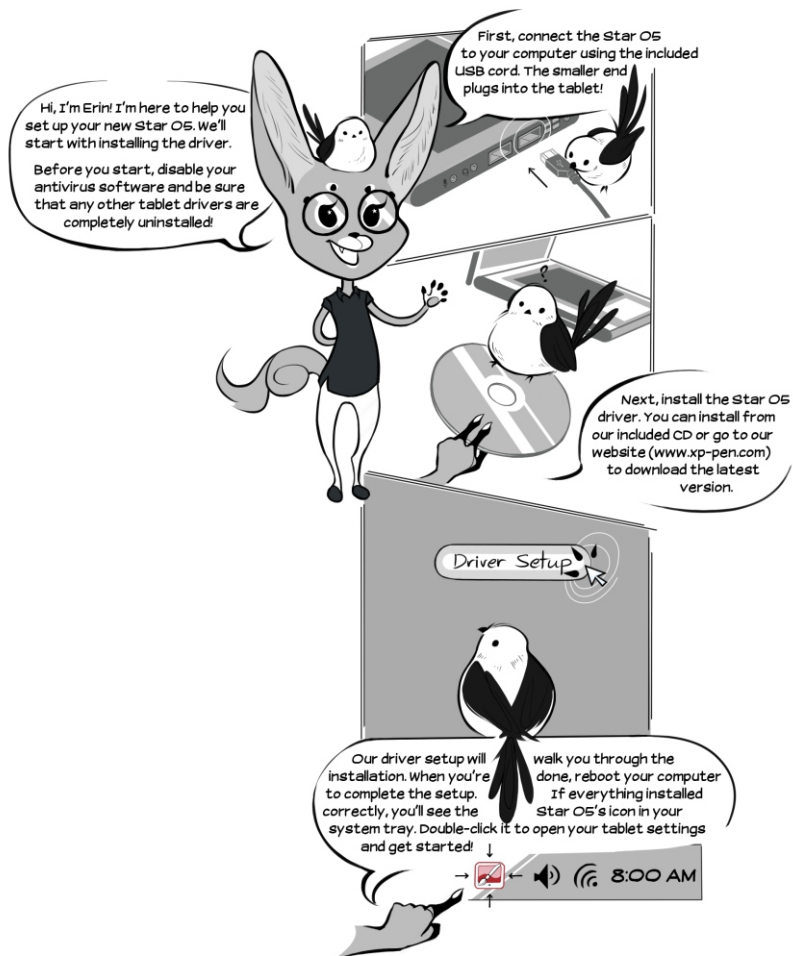
Web site: www.xp-pen.com
Mail: service@xp-pen.com

Please contact us with any questions

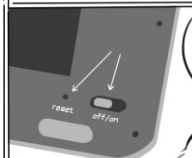


Designed by XPPEN Technology CO. in California, Assembled in China

Windows 10,8,7 and Vista Mac 10.7 or above



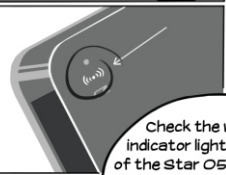
For wireless use, leave the USB cord behind! Just plug the mini USB receiver into your computer.



On the back of the Star 05, you'll find a small pinhole to the left of the Off/On switch.

This is the reset button.

While holding down the reset button with a toothpick or other small object, swipe the Off/On switch to the right. You'll only need to do this once!



Check the wireless indicator light on the front of the Star 05. If it's on, you're connected! If it isn't, try step two again.



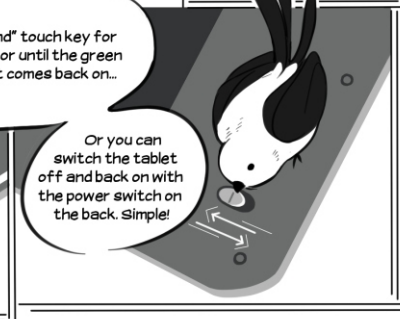
If the Star 05 is left idle for thirty minutes in wireless mode, it will automatically enter sleep mode. Your tablet can be woken up in two ways.



You can hold the "hand" touch key for three to five seconds, or until the green wireless indicator light comes back on...

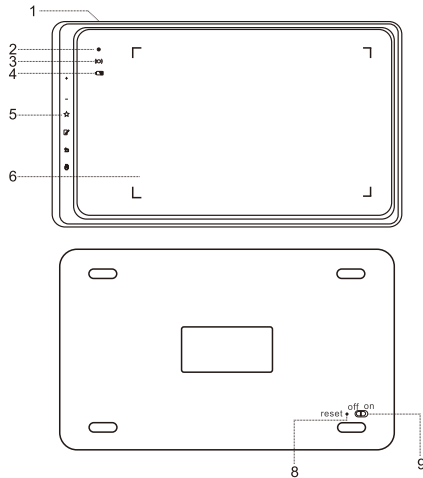


Or you can switch the tablet off and back on with the power switch on the back. Simple!



{I.Product Overview}

Thank you for purchasing the XP-Pen tablet. Our product quick guide currently supports English, Russian, Japanese, German, Korean, Chinese, Spanish, and French. We apologize if your preferred language is not supported.

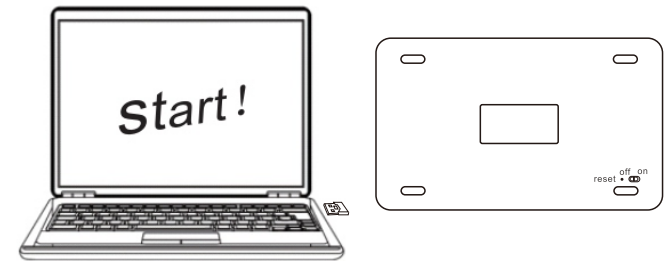


1. USB plugin
2. Status indicator light
 - a. Blinking light: Stylus is in range of, but not touching, the working area.
 - b. Solid light: Stylus is touching the working area.
 - c. No light: Stylus is out of detection range.
3. Wireless indicator light
 - a. On: Tablet is connected via wireless USB.
 - b. Off: Tablet is not connected via wireless USB.
4. Battery indicator light
 - a. On, blue: Tablet is connected and charging via corded USB.
 - b. On, red: Tablet battery is low.
 - c. On, green: Tablet is sufficiently charged.
5. Touch keys
6. Working area
7. USB receiver
8. Reset button
9. Power on/off button

{II.Connecting the Star05}

a. Wireless USB

- (1). Insert the included USB wireless receiver into your computer's USB port.
- (2). Use a toothpick, needle, or other small object to press the reset button on the back of the Star 05.
- (3). While continuing to press the reset button, slide the on/off switch to the right to turn on the tablet.
- (4). If successful, the Star 05's green wireless indicator light will light up and remain on. If the wireless indicator light does not light up, repeat steps 2 and 3.



b. Corded USB

- (1). Connect the Star 05 to your computer with the included USB cable.
- (2). Switch the tablet on.



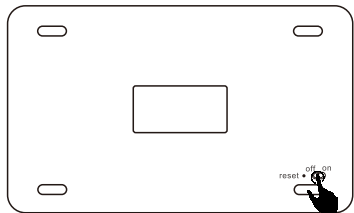
c. Sleep mode

When connected wirelessly, the Star 05 will automatically enter sleep mode after being idle for 30 minutes. The tablet can be woken up two ways:

- (1). Hold the "Hand" touch key for 3 to 5 seconds.




- (2). Turn the tablet off and back on with the power switch on the back.

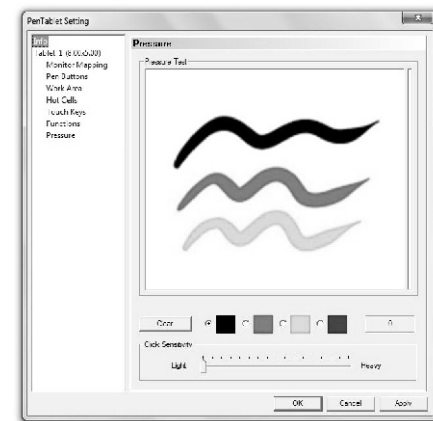


{III. Driver Installation}

1. Disable any antivirus or firewall software before beginning the installation.
2. Uninstall any existing tablet software before attempting to install the Star 05 driver. Other tablet drivers will conflict with the Star 05 driver or prevent installation entirely.
3. You may install the Star 05 driver with the included CD or download the latest driver version from the XP-Pen website (www.xp-pen.com). If you choose to download the driver from the website, be sure to extract the .zip file contents before running "install.exe."

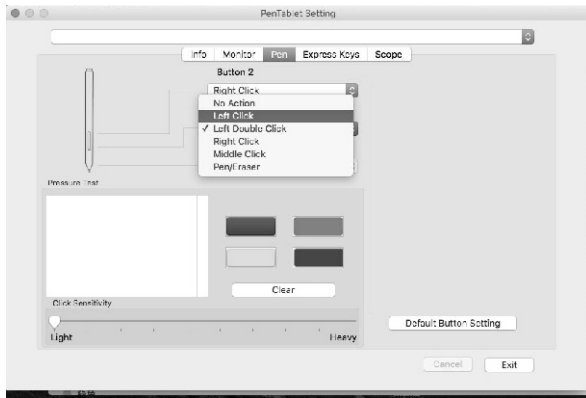
a. Windows driver installation

- (1). Connect the Star 05 to your computer using the included USB cord.
- (2). Insert the included driver CD into your computer's CD/DVD drive and follow the on-screen instructions. If setup does not begin automatically, open the disc contents manually and run "setup.exe" or "install.exe."
- (3). After a successful installation, the driver's icon () will appear on your taskbar. If the icon is not present, uninstall the driver, reboot, and repeat step 2.
- (4). If the driver icon is visible, open the driver settings UI and click "Pressure." Here you can test the Star 05's pressure sensitivity. If your tablet responds to pressure here, its pressure sensitivity is functional.



b. Mac driver installation

- (1). Connect the Star 05 to your computer using the included USB cord.
- (2). Insert the included driver CD into your computer's CD/DVD drive.
- (3). Open the CD's file list. Open the "Mac Driver" folder, then run "PenTablet.pkg."
- (4). Follow the on-screen instructions, then reboot your computer.
- (5). If the driver icon is visible, open the driver settings UI and click "Pen." Here you can test the Star 05's pressure sensitivity. If your tablet responds to pressure here, its pressure sensitivity is functional.



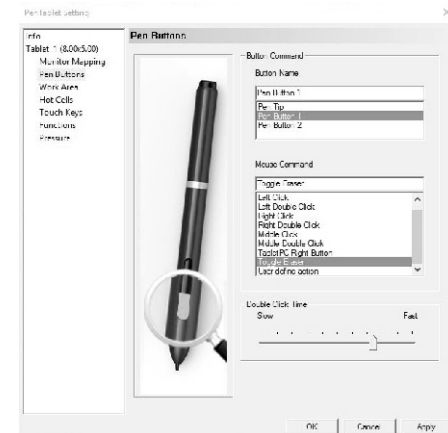
{IV. Star 05 touch keys}

The Star 05's touch keys can be customized in the driver settings UI. See the full manual for details.



{V.Pen/Eraser toggle}

With the stylus in range of the tablet's working area, clicking the first barrel button will, by default, toggle between pen and eraser modes. The current selected mode will briefly appear in the bottom middle of your display.



If you have any questions, please contact us at:

Skype: XP-Pen

Web: www.xp-pen.com

Email: service@xp-pen.com