



Artist 22E Quick Guide

Windows 10,8,7 and Vista Mac 10.7 or above

English / Русский язык / 日本語 / 中文 /
Deutsch / 한국어 / Español / Français / Italiano



Web site: www.xp-pen.com
Mail: service@xp-pen.com

Please contact us with any questions



Designed by XPPEN Technology CO. in California, Assembled in China

www.xp-pen.com

Thank you for purchasing the XP-Pen tablet. Our product quick guide currently supports English, Russian, Japanese, German, Korean, Chinese, Italian, Spanish, and French. We apologize if your preferred language is not supported.

{I. Product Overview}



- (1). Display/Working area
- (2). Express keys
- (3). Power indicator light
 - a. On, blue: The Artist 22E is connected to your computer and powered on.
 - b. On, red: The Artist 22E is powered on, but not connected to a computer.
 - c. Off: The Artist 22E is powered off.
- (4). Power button
- (5). Menu button
- (6). + button
- (7). - button
- (8). Display auto-adjust button
- (9). USB port
- (10). Power jack
- (11). HDMI port
- (12). DVI port
- (13). VGA port
- (14). Stand adjustment lever
- (15). Stand

{II.Connecting the Artist22E}

1. Connect the Artist 22E to your computer via the included USB cord.
2. Connect the Artist 22E's power cord. Plug the cord into the included adapter, then into a wall outlet.
3. Connect the Artist 22E to your computer via the included HDMI cord.



Notes:

If your tablet displays a "No Signal" error message:

- (a). Unplug the Artist 22E's HDMI/VGA and power cords, then plug them back in. Ensure that each cord is connected well. Reboot your computer.
- (b). Test the Artist 22E on a different computer to check for hardware issues.
- (c). If the error persists on different computers and (a) does not solve it, contact XP-Pen support.

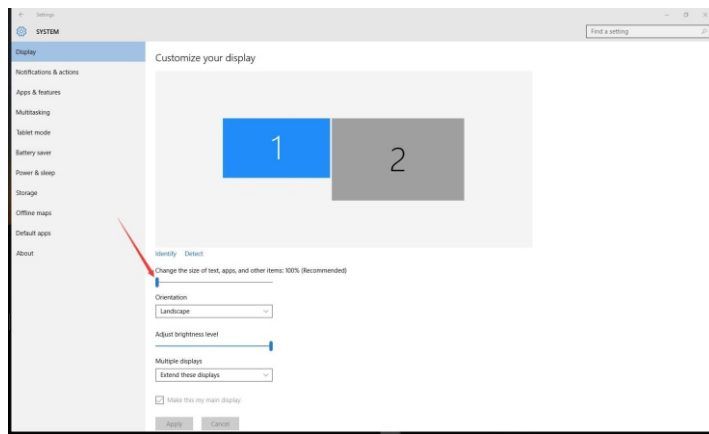
{III. Driver installation}

Notes:

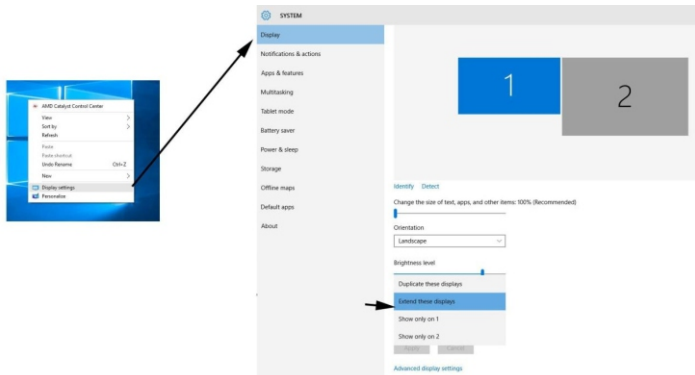
- (a). Disable any antivirus or firewall software before beginning the installation.
- (b). Uninstall any existing tablet software before attempting to install the Artist 22E driver. Other tablet drivers will conflict with the Artist 22E driver or prevent installation entirely.
- (c). You may install the Artist 22E driver with the included CD or download the latest driver version from the XP-Pen website (www.xp-pen.com). If you choose to download the driver from the website, be sure to extract the .zip file contents before running install.exe.
- (d). The Artist 22E's maximum resolution is 1920x1080.

Windows driver installation

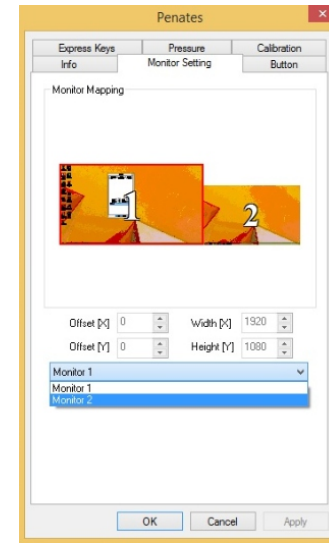
- (1). Connect the Artist 22E to your computer using the included HDMI, USB & Power cords. Turn on the tablet.
- (2). Insert the included driver CD into your computer's CD/DVD drive and follow the on-screen instructions. If setup does not begin automatically, open the disc contents manually and run setup.exe or install.exe.
- (3). After the installation has completed, reboot your computer.
- (4). After a successful installation, the driver's icon (🖱️) will appear in your system tray. If the icon is not present; uninstall the driver, reboot, and repeat step 2.
- (5). **(Recommended)** Open [Control Panel] > [Display], then set Change the size of text, apps, and other items to 100%.



- (6). In [Control Panel] > [Display], change your dual monitor settings to Extend these displays or Duplicate these displays.
- (7). In Extend these displays mode, set your Artist 22E's resolution to 1920x1080.
- (8). In Duplicate these displays mode, set both of your monitors' resolutions to 1920x1080.

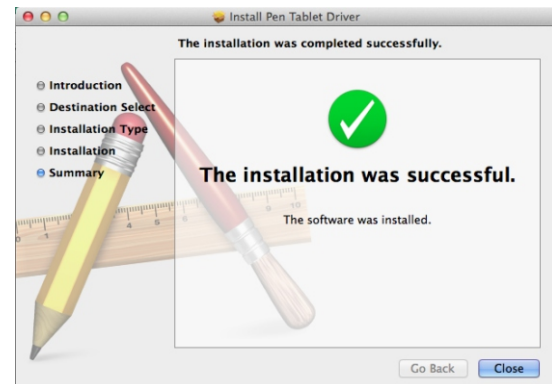


- (9). Apply and exit.
- (10). In **Extend mode**: Click the driver's system tray icon to open your tablet settings. Set your Artist 22E to Monitor 2 in the Monitor Setting tab. Apply and exit.

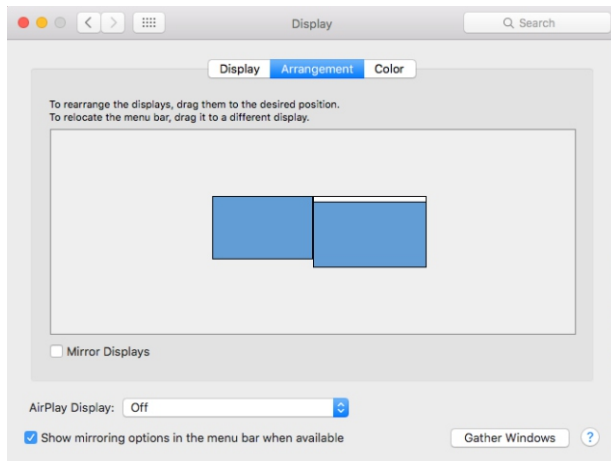
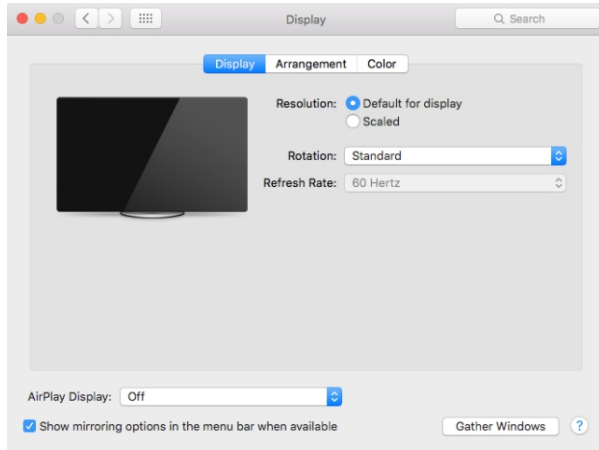


Mac driver installation

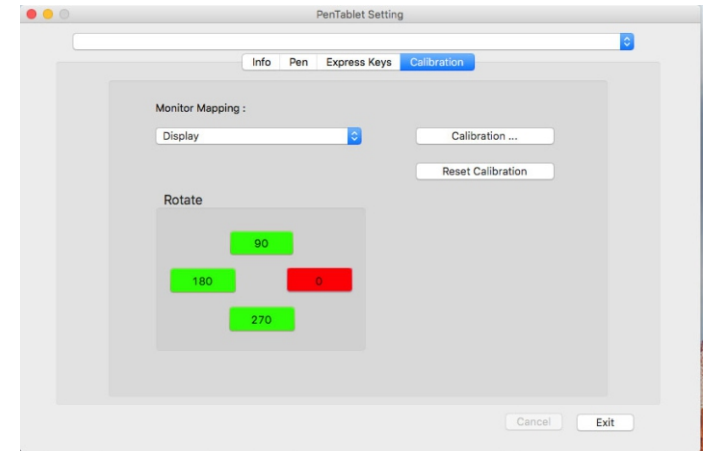
- (1). Connect the Artist 22E to your computer using the included HDMI, USB & Power cords. Turn on the tablet.
- (2). Insert the included driver CD into your computer's CD/DVD drive.
- (3). Open the CD's file list. Open the Mac Driver folder, then run PenTablet.pkg.
- (4). Follow the on-screen instructions, then reboot your computer.



- (5). Open [System Preferences] > [Display]. In the *Display* tab, set your resolution to *Default for display*.



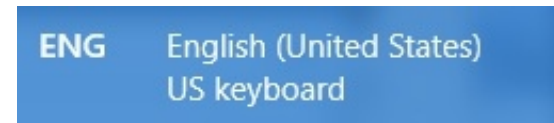
- (6). In the *Arrangement* tab, you may choose to *Mirror Displays*. With *Mirror Displays* enabled, both monitors' resolutions should be set to 1920x1080.
- (6.1) Open [Finder] > [Applications] > [Touch Tablet] > [Pen Tablet Setting].
- (6.2) In the *Calibration* tab, set *Monitor Mapping* to *Full Monitor*.
- (7). With Mirror Displays disabled, set your Artist 22E's resolution to 1920x1080.
- (7.1) Open [Finder] > [Applications] > [Touch Tablet] > [Pen Tablet Setting].
- (7.2) In the *Calibration* tab, set *Monitor Mapping* to *Monitor 2*.



{IV. Express keys}

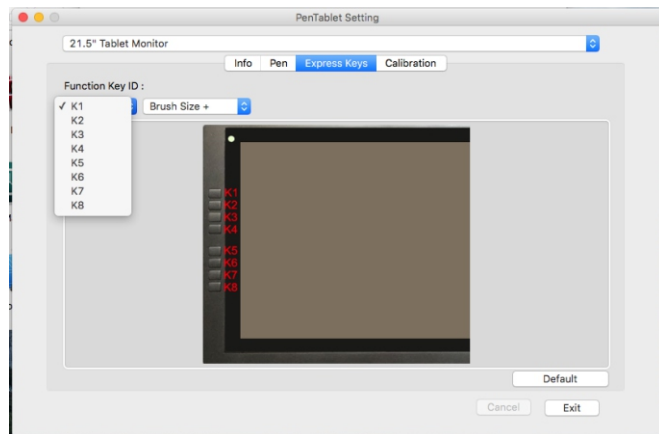
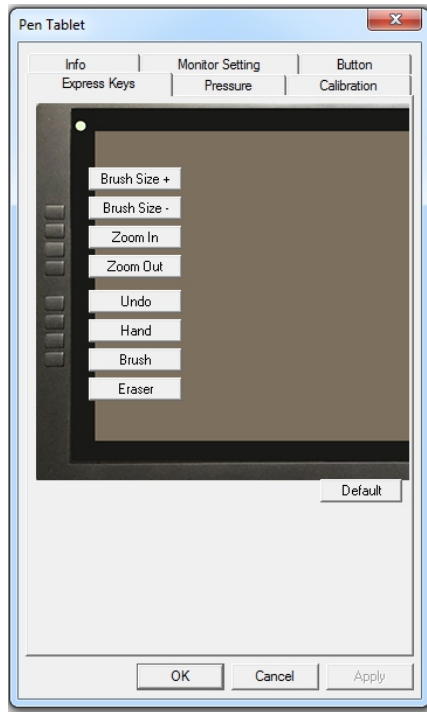
Notes:

- (a). The Artist 22E's express keys are designed to work with US English keyboards. Keys may not function correctly with other keyboard languages.



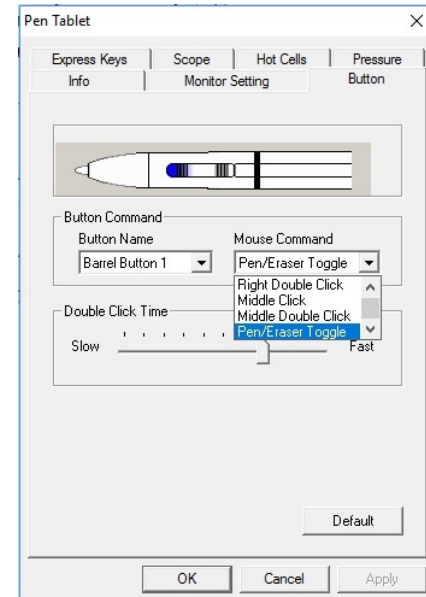
- (b). By default, the Artist 22E's express keys are mapped to standard Photoshop keyboard shortcuts. Keys can be customized to function efficiently in other software.

The Artist 22E's express keys can be customized in the driver settings UI. See the full manual for details.



{V.Pen/Eraser toggle}

With the stylus in range of the tablet's working area, clicking the first barrel button will, by default, toggle between pen and eraser modes. The current selected mode will briefly appear in the bottom middle of your display.



If you have any questions, please contact us at:
 Skype: XP-Pen
 Web: www.xp-pen.com
 Email: service@xp-pen.com